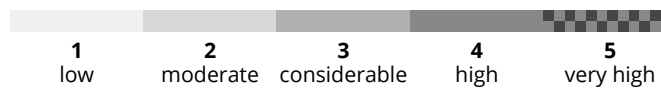
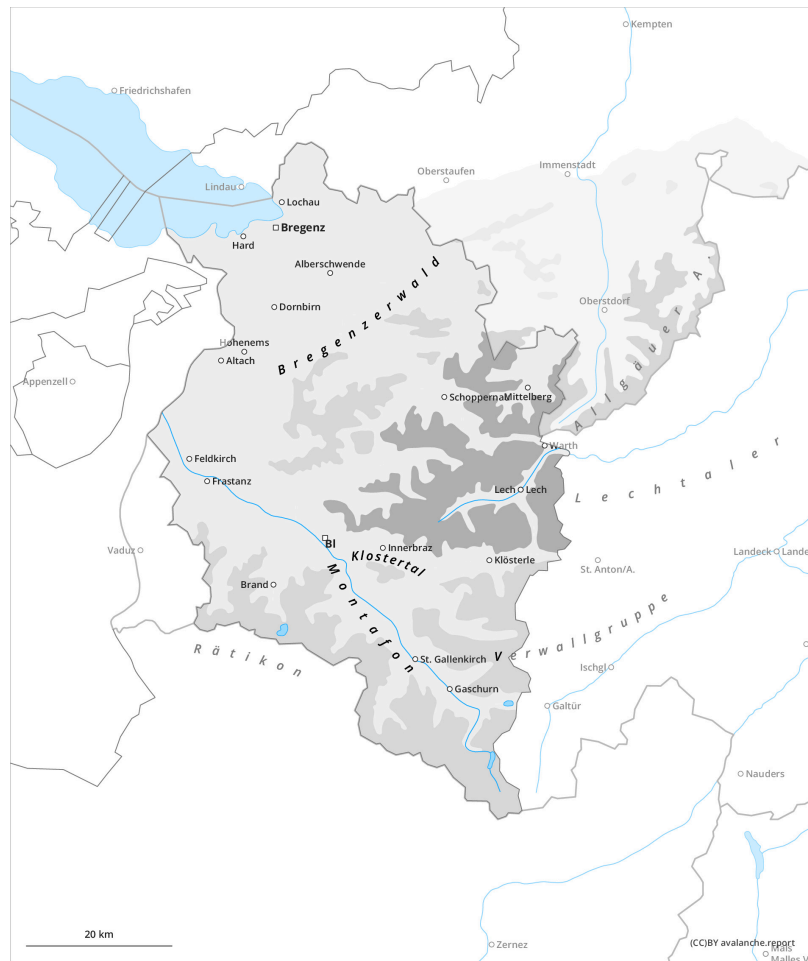


# Avalanche bulletin Vorarlberg

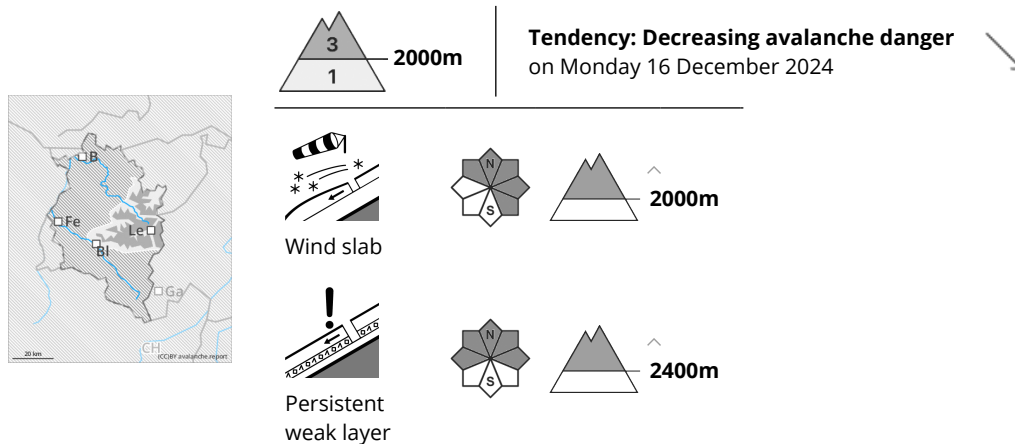
## Sunday 15 December 2024

Updated 15 Dec 2024, 07:53:00

Valid from 14 Dec 2024, 17:00:00 until 15 Dec 2024, 17:00:00



## Danger Level 3 - Considerable



### Fresh snowdrifts are main danger

#### Danger assessment

Above the treeline, fresh snowdrift accumulations are prone to triggering. Danger zones occur mostly on shady slopes behind protruberances in the landscape, in gullies and bowls and on wind-loaded slopes. Size and spread tend to increase with ascending altitude. Small-to-medium slab avalanches can be triggered even by the weight of one single skier. Above 2400m, isolated avalanches can trigger in the old snow and grow to medium size. Below the treeline, avalanche danger is low.

#### Snowpack

The fresh snowfall is being deposited mostly on steep shady slopes atop metamorphosed old snowpack layers or atop surface hoar. On east-facing and sunny slopes, often atop encrusted surfaces. As a result of strong NW winds, widespread snowdrifts will accumulate. The fresh snow will be increasingly poorly bonded with the old snowpack surface with ascending altitude. In places in high-altitude shady spots and where the snow is shallow, weak faceted layers are evident in the snowpack. All in all, the snowpack is highly varied: ridges are often windblown, gullies and bowls are filled to the brim with snow.

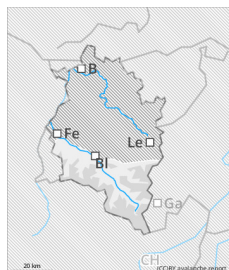
#### Weather

During the nocturnal hours, some snowfall is expected. Due to a powerful NW air current it will become windy in ridgeline zones. Especially in the northern regions, further snowfall is anticipated. Starting at midday, increasingly sunny, the fog and clouds will disperse. At 2000m: -8 degrees. Strong-velocity NW winds at high altitude.

#### Tendency

Monday will be sunny and noticeably milder. Avalanche danger levels will decrease.

## Danger Level 2 - Moderate



**Tendency: Constant avalanche danger** →  
on Monday 16 December 2024



Wind slab



Persistent  
weak layer



### Fresh snowdrifts are main danger

#### Danger assessment

Above the treeline, fresh snowdrift accumulations are prone to triggering. Danger zones occur mostly on shady slopes behind protruberances in the landscape, in gullies and bowls and on wind-loaded slopes. Size and spread tend to increase with ascending altitude. Small-to-medium slab avalanches can be triggered even by the weight of one single skier. Above 2400m, isolated avalanches can trigger in the old snow and grow to medium size. Below the treeline, avalanche danger is low.

#### Snowpack

The fresh snowfall is being deposited mostly on steep shady slopes atop metamorphosed old snowpack layers or atop surface hoar. On east-facing and sunny slopes, often atop encrusted surfaces. As a result of strong NW winds, widespread snowdrifts will accumulate. The fresh snow will be increasingly poorly bonded with the old snowpack surface with ascending altitude. In places in high-altitude shady spots and where the snow is shallow, weak faceted layers are evident in the snowpack. All in all, the snowpack is highly varied: ridges are often windblown, gullies and bowls are filled to the brim with snow.

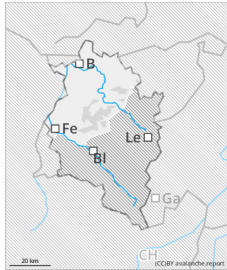
#### Weather

During the nocturnal hours, some snowfall is expected. Due to a powerful NW air current it will become windy in ridgeline zones. Especially in the northern regions, further snowfall is anticipated. Starting at midday, increasingly sunny, the fog and clouds will disperse. At 2000m: -8 degrees. Strong-velocity NW winds at high altitude.

#### Tendency

Monday will be sunny and noticeably milder. Avalanche danger levels will decrease.

## Danger Level 2 - Moderate



**Tendency: Constant avalanche danger** →  
on Monday 16 December 2024



Wind slab



Treeline

### Above the treeline, snowdrifts demand caution

#### Danger assessment

Above the treeline, fresh snowdrift accumulations are prone to triggering. Danger zones occur mostly on shady slopes behind protruberances in the landscape, in gullies and bowls and on wind-loaded slopes. Below the treeline, avalanche danger is low.

#### Snowpack

The fresh snowfall is being deposited mostly on steep shady slopes atop metamorphosed old snowpack layers or atop surface hoar. On east-facing and sunny slopes, often atop encrusted surfaces. As a result of strong NW winds, widespread snowdrifts will accumulate. The fresh snow will be increasingly poorly bonded with the old snowpack surface with ascending altitude. In places in high-altitude shady spots and where the snow is shallow, weak faceted layers are evident in the snowpack. All in all, the snowpack is highly varied: ridges are often windblown, gullies and bowls are filled to the brim with snow.

#### Weather

During the nocturnal hours, some snowfall is expected. Due to a powerful NW air current it will become windy in ridgeline zones. Especially in the northern regions, further snowfall is anticipated. Starting at midday, increasingly sunny, the fog and clouds will disperse. At 2000m: -8 degrees. Strong-velocity NW winds at high altitude.

#### Tendency

Monday will be sunny and noticeably milder. Avalanche danger levels will decrease.