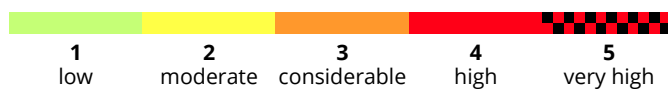
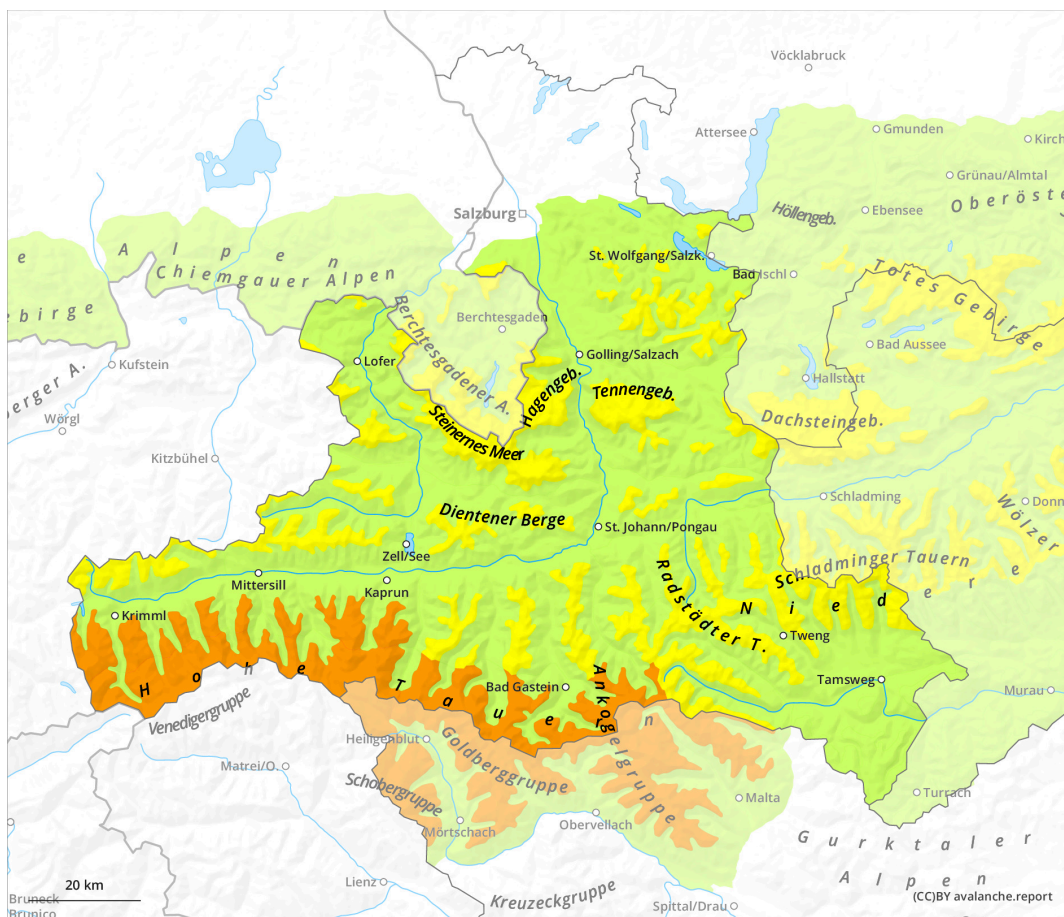


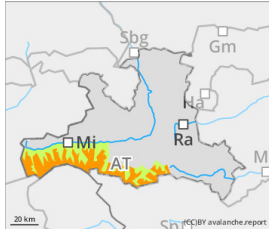
Avalanche bulletin Salzburg

Sunday 15 December 2024

Updated 15 Dec 2024, 07:53:00
Valid from 14 Dec 2024, 17:00:00 until 15 Dec 2024, 17:00:00



Danger Level 3 - Considerable



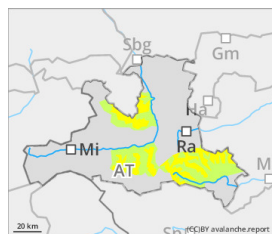
Wind slab



Persistent
weak layer



Danger Level 2 - Moderate



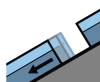
Tendency: Constant avalanche danger →
on Monday 16 December 2024



Wind slab



Treeline



Gliding snow



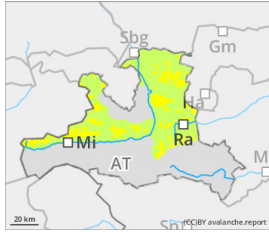
2200m

Avoid wind-loaded terrain

Danger assessment

Avalanche danger above the treeline is moderate. The main problem is freshly generated snowdrift accumulations which can trigger a small, and in isolated cases also a medium-sized slab avalanche even by minimum additional loading. Danger zones for slab avalanches occur particularly in NW/N/SE facing slopes and in steep ridgeline terrain. Above 2400m an avalanche which is unleashed on the surface can fracture down to deeper layers inside the old snowpack. In very steep, unstructured terrain below 2200m, isolated naturally triggered glide-snow avalanches can unleash. Avoid all terrain below glide cracks.

Danger Level 2 - Moderate



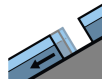
Tendency: Increasing avalanche danger
on Monday 16 December 2024



Wind slab



Treeline



Gliding snow



2200m

Danger Level 1 - Low



Tendency: Constant avalanche danger →
on Monday 16 December 2024



Wind slab



Treeline

Avalanche danger is generally low, but isolated danger zones occur due to freshly generated snowdrift accumulations.

Snowpack

The small amount of fresh fallen snow and fresh snowdrifts often blanket surface hoar or else faceted old snow and can be prone to triggering. The snow base is often quite shallow and in isolated cases is weakened by faceted layers on shady high-alpine slopes.

Weather

On Saturday night, up to 10 cm of fresh snowfall is anticipated. Strong - and in exposed terrain even storm-strength winds - from west to northwest will transport the fresh snow in irregular fashion. On Sunday, frequent snowfall is expected until after midday, visibility will be poor, improving only in the afternoon. Another 5-10 cm of fresh snow is expected. At 2000m: -8 degrees. Northwesterly winds will reach peaks of 50-80 km/hr.

Tendency

On Monday, no significant change is expected.