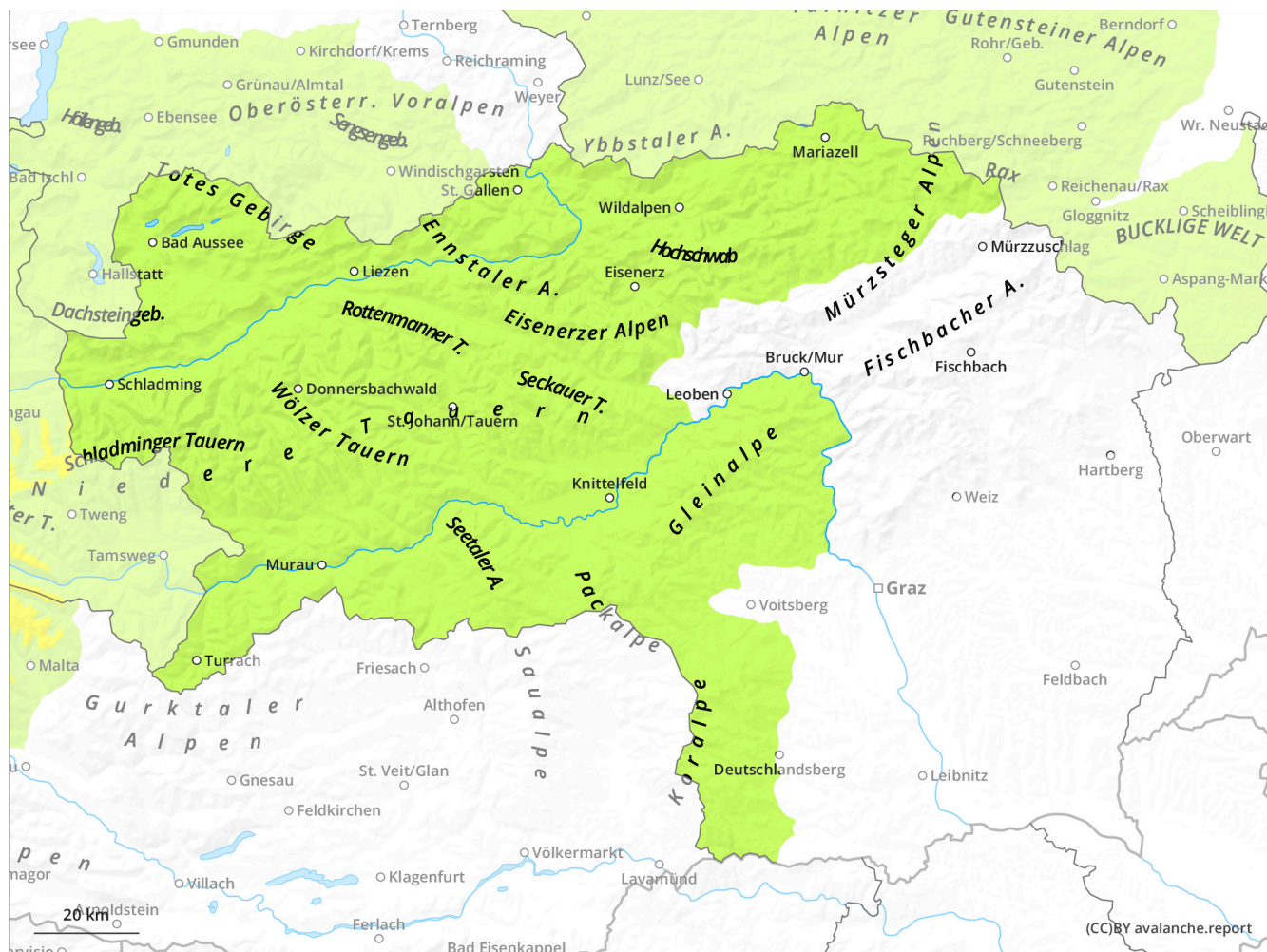
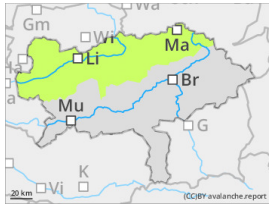


Avalanche danger in general low-little snow



Danger Level 1 - Low



Tendency: Increasing avalanche danger
on Sunday 15 December 2024



Avalanche danger in general low.

Danger assessment

The Avalanche danger is in general low, few danger spots are found in high, extremely steep shady slopes and gullies. There small slab avalanches are only possible with high additional loads.

Snowpack

The new snow from the weekend has settled without significant weak layers. In high shady slopes the snow base is formed of faceted snow which could be a weak layer in some areas. Surface hoar is possible.

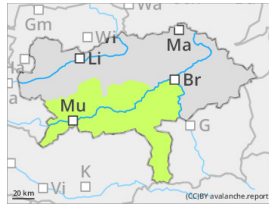
Weather

Weather is changing during Friday night, southwesterly upper air flow are bringing clouds. In the morning the air flow changes over west and northwest with stormy wind in the summit region. In the evening snow in Dachstein and Ennstaler Alps is to expect. Temperatures on 2.000 m AMSL are decreasing from -2 to -6 degrees C.

Tendency

New snow and stormy northwesterly winds are increasing the avalanche danger scale.

Danger Level 1 - Low



Tendency: Increasing avalanche danger
on Sunday 15 December 2024



Avalanche danger in general low.

Danger assessment

The Avalanche danger is in general low, few danger spots are found in high, extremely steep shady slopes and gullies. There small slab avalanches are only possible with high additional loads.

Snowpack

South of the Alps the amount of loose snow is low without significant weak layers. In higher shady slopes the snow base is built of faceted snow.

Weather

Weather is changing during Friday night, southwesterly upper air flow are bringing clouds. Little snow during the night is possible in Gurktaler and Seetaler Alps. In the morning the air flow changes over west and northwest with accumulating clouds in the northern region south of Alpenhauptkamm clear skies are possible. Vivid winds from northwest are to expect. Temperatures on 2.000 m AMSL are decreasing from -2 to -4 degrees C.

Tendency

New snow and stormy northwestern winds lead to rising avalanche danger level in Niedere Tauern on Sunday. South of that the avalanche danger scale will not significantly change due to the lack of new snow.