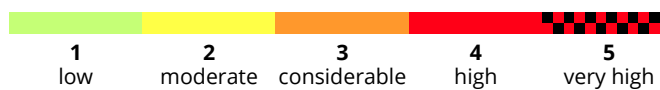
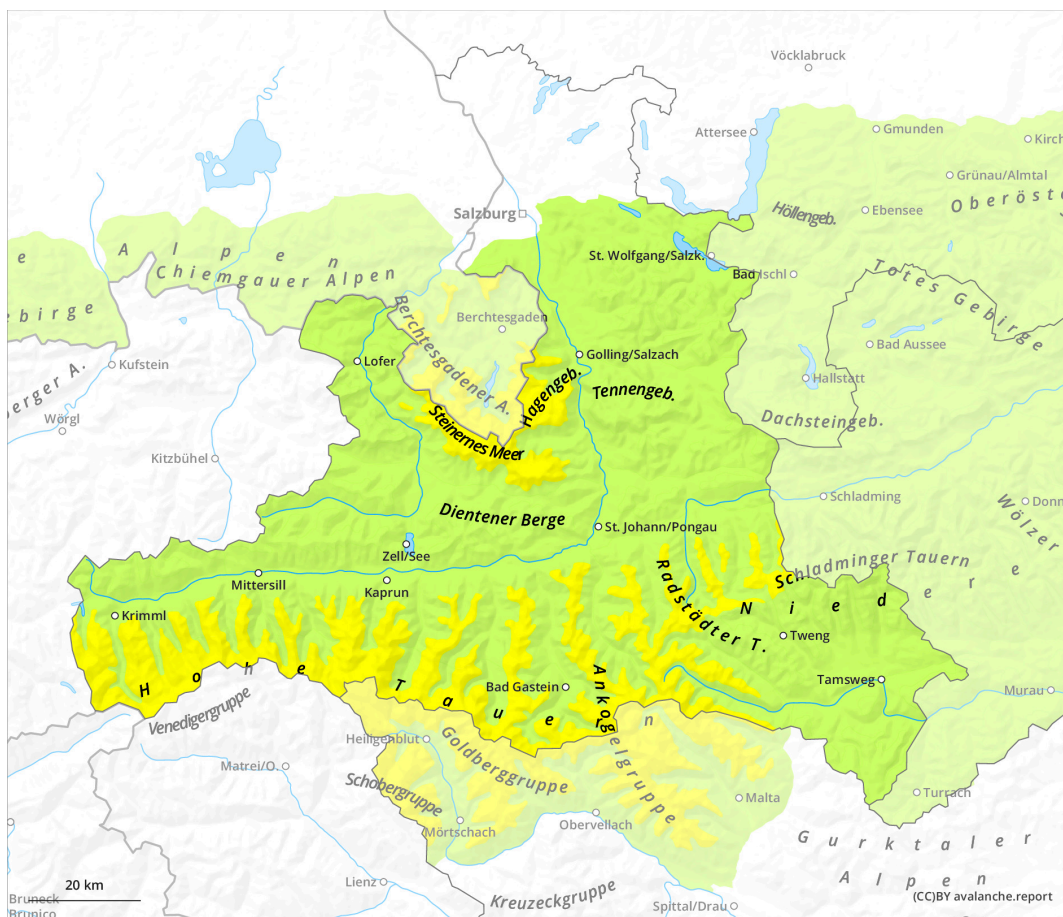


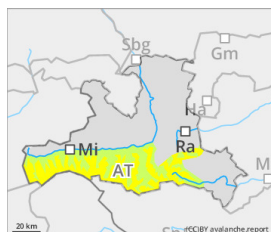
Snowdrift problem near ridgelines plus gliding snow activity



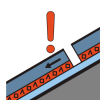
Danger Level 2 - Moderate



Tendency: Increasing avalanche danger
on Sunday 15 December 2024



Wind slab



Persistent
weak layer



**On shady slopes isolated danger zones due to weak layers in old snow.
Evaluate fresh snowdrifts with caution.**

Danger assessment

Avalanche danger as of 2400m is moderate, danger is low below that altitude. On shady slopes at high and high-alpine altitudes, small-to-medium slab avalanches can be triggered in the old snow. In addition, small, fresh snowdrift accumulations will be generated near ridgelines during the course of the day. Danger zones occur mostly in transitions from shallow to deep snow, e.g. at the edge of gullies and bowls and behind protruberances in the landscape. Danger zones tend to increase with ascending altitude. The weight of one persons is sufficient to trigger a slab in steep terrain.

Snowpack

At high and high alpine altitudes, fresh and older snowdrift accumulations have been deposited on the surfaces atop loosely-packed layers of older snow or atop surface hoar, both of which are prone to triggering. Beneath these layers, the snow which has persisted since September and November as fundament is weakened by layers of faceted crystals. The snow is distributed highly irregularly: ridges are often totally windblown, but elsewhere the fresh fallen snow also doesn't cover the base.

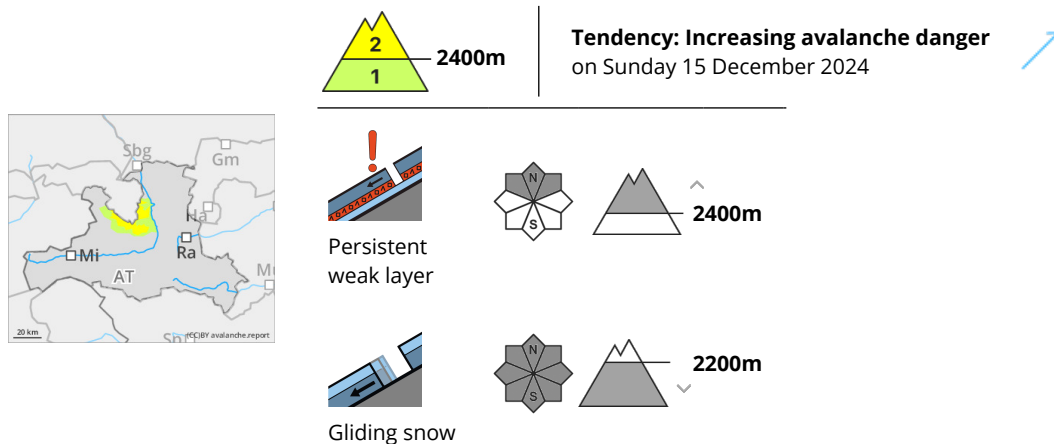
Weather

After midnight clouds will move in and towards morning light snowfall is possible in the Tauern and Lungau regions. In exposed high altitude terrain, brisk southerly winds initially, easing off during the nocturnal hours, otherwise only light winds. Temperatures will drop. On Saturday, clouds will become dense, minor snowfall is anticipated. Westerly to northwesterly winds will intensify, gusts reaching 50 km/hr in exposed terrain during the afternoon. At 2000m, temperatures will descend to -6 degrees; at 3000m, to -13 degrees centigrade. On Saturday night, moderately strong snowfall will spread far-reachingly, by Sunday morning 5-10 cm of fresh fallen snow is expected.

Tendency

As a result of fresh snowfall and wind impact, the danger from freshly generated snowdrifts will increase somewhat on Sunday.

Danger Level 2 - Moderate



On shady slopes isolated danger zones due to weak layers in old snow.

Danger assessment

Avalanche danger as of 2400m is moderate, danger is low below that altitude. On shady slopes at high and high-alpine altitudes, small-to-medium slab avalanches can be triggered in the old snow. Slab avalanches can be triggered in steep terrain particularly by large additional loading. On extremely steep grass-covered slopes, isolated small-sized glide-snow avalanches can trigger naturally. Zones beneath glide cracks should be circumvented.

Snowpack

Older snowdrift accumulations lie deposited atop soft layers at high and high alpine altitudes, beneath which are often layers of faceted crystals. The snow is distributed irregularly, ridges are often totally windblown, and the fresh fallen snow does not cover the snow base sufficiently everywhere. The entire snowpack could start to glide over smooth ground.

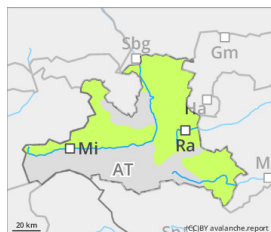
Weather

After midnight clouds will move in but bring next to no precipitation. Temperatures will drop. On Saturday, clouds will become dense, minor snowfall is anticipated. Westerly to northwesterly winds will intensify, gusts reaching 50 km/hr in exposed terrain during the afternoon. At 2000m, temperatures will descend to -6 degrees; at 3000m, to -13 degrees centigrade. On Saturday night, moderately strong snowfall will spread far-reachingly, by Sunday morning 5-15 cm of fresh fallen snow is expected.

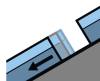
Tendency

As a result of fresh snowfall and wind impact, the danger from freshly generated snowdrifts will increase somewhat on Sunday.

Danger Level 1 - Low



Tendency: Increasing avalanche danger
on Sunday 15 December 2024



Gliding snow



Avalanche danger is low, isolated small-sized glide-snow avalanches

Danger assessment

Avalanche danger is low. In isolated cases on very steep slopes, small-sized glide-snow avalanches can trigger on smooth ground, below 2200m small glide-snow avalanches can release. Zones on slopes beneath glide cracks should be circumvented.

Snowpack

The snow cover is settling to an increasing degree. It is not yet sufficiently thick for activities in outlying terrain. Surface hoar has formed widespread on the surface. Over smooth ground, the entire snowpack can start to glide, e.g. on grass-covered slopes steeper than 35° the entire snowpack can glide over the ground.

Weather

On Friday night clouds will move in and towards morning light snowfall is possible in the Lungau region. Temperatures will drop. On Saturday, clouds will become dense, minor snowfall is anticipated. Westerly to northwesterly winds will intensify, gusts reaching 50 km/hr in exposed terrain during the afternoon. At 2000m, temperatures will descend to -6 degrees; at 2500m, to -10 degrees centigrade. On Saturday night in the Northern Alps 5-15 cm of fresh snow is expected, 5-10 cm of fresh fallen snow is expected in the Tauern, only little snowfall in the Lungau Nockberge.

Tendency

Danger expected to remain constant