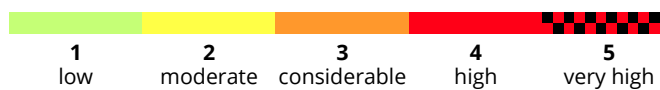
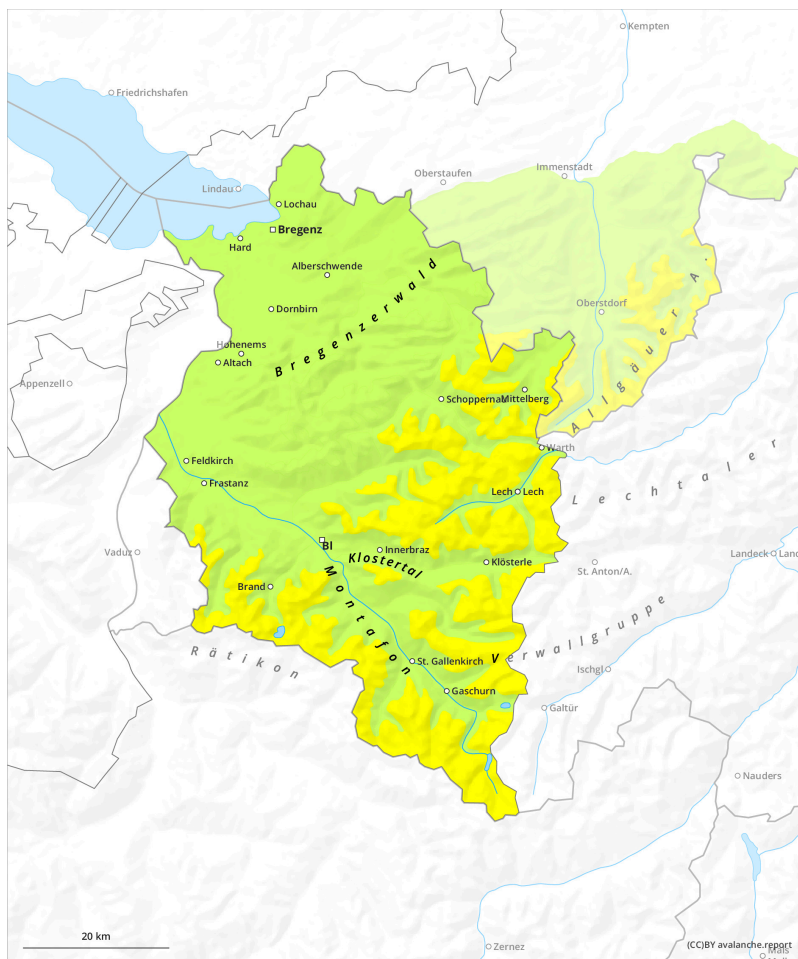
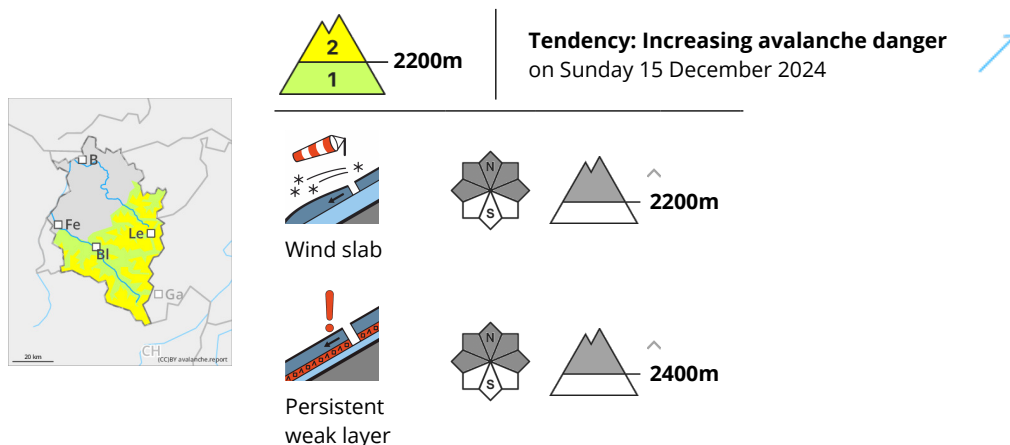


Generally low avalanche danger, moderate danger at high altitudes



Danger Level 2 - Moderate



Freshly generated snowdrifts. Isolated danger zones in old snow.

Danger assessment

Above 2200m, fresh, small snowdrift accumulations are often prone to triggering, occur on shady slopes behind protruberances in the landscape, in gullies and bowls and on wind-loaded slopes. Spread and size tend to increase with ascending altitude and during the course of the day. Apart from the risks of avalanches, the dangers of being swept along and forced to take a fall need to be taken into consideration. Above 2400m, isolated avalanches can be triggered also in the old snow and grow to medium size. At low altitudes isolated small glide-snow avalanches are possible, particularly on very steep sunny slopes. On slopes with glide cracks, high caution is necessary.

Snowpack

On nights with clear skies, the snowpack surface metamorphosed expansively on shady slopes. In shady places at high altitudes, weak layer are evident in the snowpack, also near ground level where the snowpack is shallow. Due to moderate southerly winds, fresh, mostly small snowdrifts accumulated in ridgeline and pass areas. As a result of intensifying westerly winds in Saturday, more trigger-sensitive snowdrift accumulations will be generated. On steep sunny slopes the snowpack surface was moistened up to 2800m on Friday, overnight it will form a thin melt-freeze crust. Depending on wind impact, the snow is distributed very irregularly, ridges often windblown, gullies and bowls often filled to the brim with snow.

Weather

A change in weather. Right from the start, heavily overcast, hardly any sunshine, clouds will lie above summit level in the morning, thus, diffuse light conditions. In the afternoon, all summits will become shrouded in clouds, a few snowflakes will fall. Temperatures will drop. At 2000m: -4 degrees. Winds shifting to W/NW and intensifying.

Tendency

Avalanche bulletin Vorarlberg
Saturday 14 December 2024

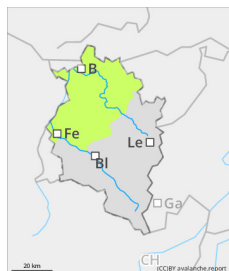
Updated 13 Dec 2024, 17:33:00

Valid from 13 Dec 2024, 17:00:00 until 14 Dec 2024, 17:00:00



Due to fresh snowfall and strong northerly winds, avalanche danger levels will increase on Sunday.

Danger Level 1 - Low



Tendency: Increasing avalanche danger
on Sunday 15 December 2024



Wind slab



Treeline

Low avalanche danger, isolated small glide-snow avalanches.

Danger assessment

Avalanche danger is low. Small-area wide, fresh snowdrift accumulations at high altitudes require caution. Below the treeline there is no striking avalanche problem evident. Particularly on very steep sunny slopes, isolated small glide-snow avalanches are possible. On slopes with glide cracks, caution is imperative.

Snowpack

On nights with clear skies, the snowpack surface metamorphosed expansively on shady slopes. On sunny slopes the snowpack surface was moistened on Friday, overnight it will form a thin melt-freeze crust. Southerly winds will generate fresh, mostly small drifted masses in higher-altitude pass and ridgeline areas. Due to intensifying westerly winds on Saturday, more trigger-sensitive snowdrift accumulations will be generated on Saturday. Depending on wind impact, the snow is distributed very irregularly, ridges often windblown, gullies and bowls often filled to the brim with snow.

Weather

A change in weather. Right from the start, heavily overcast, hardly any sunshine, clouds will lie above summit level in the morning, thus, diffuse light conditions. In the afternoon, all summits will become shrouded in clouds, a few snowflakes will fall. Temperatures will drop. At 2000m: -4 degrees. Winds shifting to W/NW and intensifying.

Tendency

Due to fresh snowfall and strong northerly winds, avalanche danger levels will increase on Sunday. Due to fresh snowfall and strong northerly winds, avalanche danger levels will increase on Sunday.