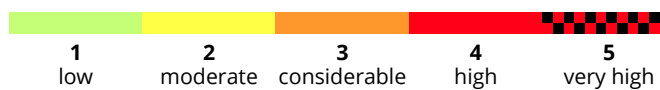
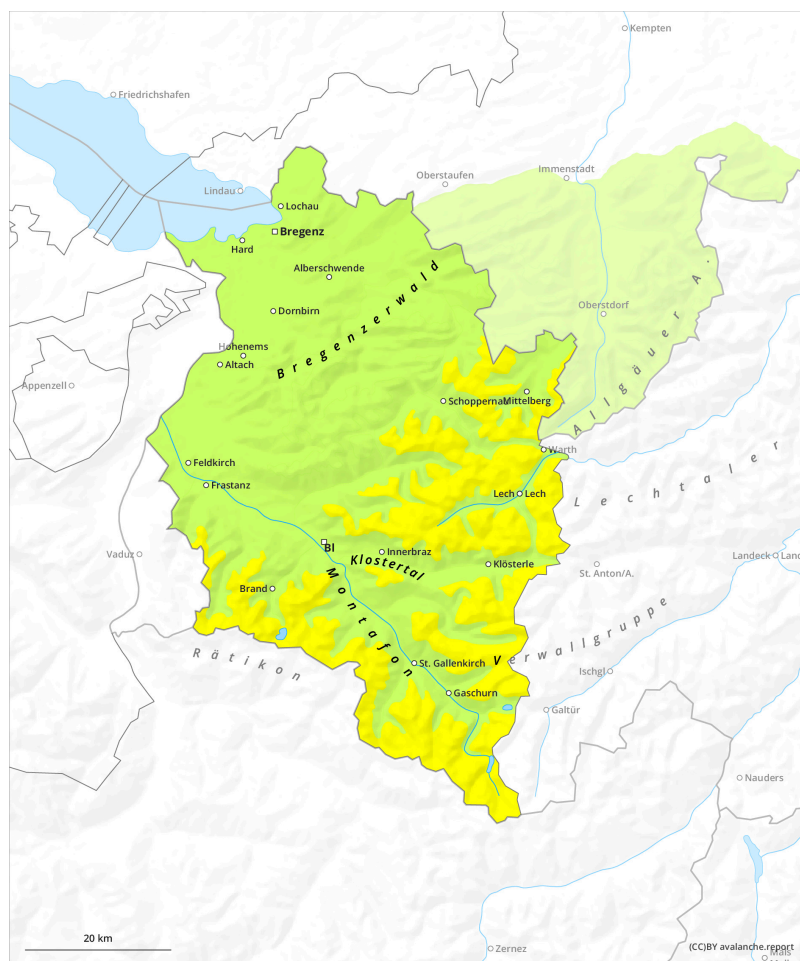
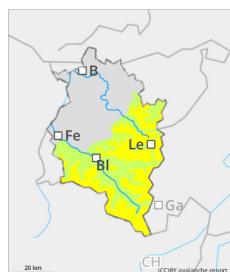


## Generally low avalanche danger, moderate danger at high altitudes



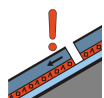
## Danger Level 2 - Moderate



**Tendency: Decreasing avalanche danger**  
on Saturday 14 December 2024



Wind slab



Persistent  
weak layer



### With increasing altitude, snowdrifts demand caution

#### Danger assessment

At higher altitudes the freshly-generated and older snowdrift accumulations are prone to triggering in some places, easily triggered as small-sized, in isolated cases as medium sized slab avalanches. Danger zones occur behind protruberances in the landscape, in gullies and bowls, and on freshly wind-loaded slopes. Magnitude and spread tend to increase with ascending altitude. Avalanche headquarters currently has little data from outlying regions about the snowpack, for that reason a cautious on-site evaluation is important. Below the treeline, avalanche danger is low. Isolated danger zone for small triggerings (slides) are possible in steep terrain. The risks of being swept along and forced to take a fall need to be considered.

#### Snowpack

The latest round of fresh snowfall was deposited atop a well consolidated old snowpack surface showing marked effect from the wind. Knolls and ridges are often totally windblown or have only a bit of fresh snow, gullies and bowls have noticeably more snow. With increasing altitude, particularly in pass and ridgeline areas, mostly small-to-medium snowdrift accumulations are evident. They are only moderate well bonded to the old snowpack surface, making them often prone to triggering.

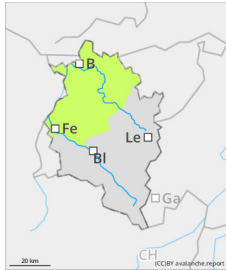
#### Weather

Right from the start, unhindered sunny mountain weather will prevail at its maximum, accompanied by mild temperatures (0 degrees at midday at 2000m). Temperature range at 2000m: -5 to 0 degrees. Light to moderate easterly winds at high altitudes.

#### Tendency

Currently, no significant change is expected.

## Danger Level 1 - Low



**Tendency: Decreasing avalanche danger**  
on Saturday 14 December 2024



Wind slab



Treeline

## Caution urged towards small-sized snowdrifts

### Danger assessment

Above the treeline, fresh, mostly small snowdrift accumulations require caution. Isolated danger zones for small avalanche triggerings (slides) in steep terrain and freshly wind-loaded slopes are possible. Avalanche headquarters currently has little data from outlying regions about the snowpack, for that reason a cautious on-site evaluation is important. Below the treeline, no marked avalanche problem is evident.

### Snowpack

The latest round of fresh snowfall was deposited atop a well consolidated old snowpack surface showing marked effect from the wind. Knolls and ridges are often totally windblown or have only a bit of fresh snow, gullies and bowls have noticeably more snow. With increasing altitude, particularly in pass and ridgeline areas, mostly small-to-medium snowdrift accumulations are evident.

### Weather

Right from the start, unhindered sunny mountain weather will prevail at its maximum, accompanied by mild temperatures (0 degrees at midday at 2000m). Temperature range at 2000m: -5 to 0 degrees. Light to moderate easterly winds at high altitudes.

### Tendency

Currently no significant change is expected.