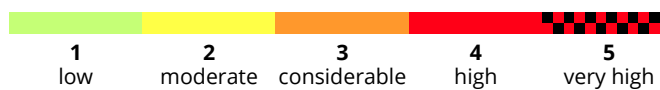
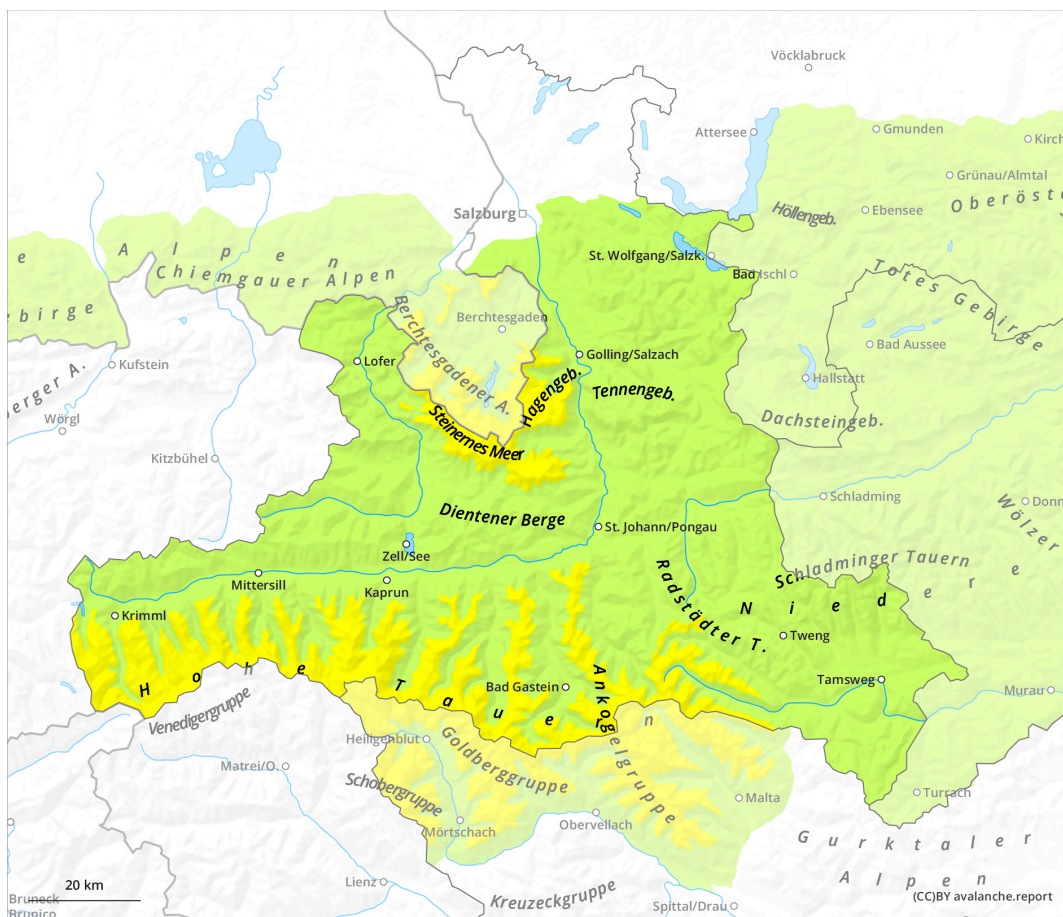
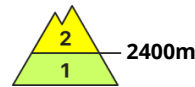
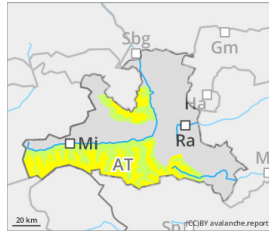


Minor snowdrift problem near ridgelines. Isolated loose-snow avalanches.



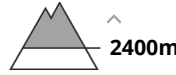
Danger Level 2 - Moderate



Tendency: Decreasing avalanche danger
on Friday 13 December 2024



Wind slab



At high and high-alpine altitudes, ridgeline snowdrifts demand caution.

Danger assessment

Avalanche danger as of 2400m is moderate, danger is low below that altitude. Near ridgelines at high and high-alpine altitudes there are shallow drifts behind protruberances in the landscape behind ridges. Generally, large additional loading is necessary to trigger a small-sized slab avalanche in, sunny, steep rocky terrain, due to solar radiation, small loose-snow avalanches can trigger by large additional loading.

Snowpack

Loosely-packed fresh fallen snow is settling to an increasing degree, now covering older snowdrifts. At high and high-alpine altitudes the NE winds can transport the snow to ridgelines. At high and high-alpine altitudes the September snow has persisted and now serves as a compact base. In isolated cases these layers contain faceted crystals, they could serve as a fracture surface. The snow is distributed highly irregularly, ridges broad and narrow are often completely windblown, and even in other places the fresh fallen snow insufficiently blankets the snow base.

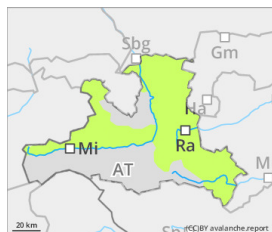
Weather

Nighttime skies will mostly be star-studded and dry. In northern regions, low-lying high-foglike clouds will persist. Winds at all altitudes will be light to moderate. On Thursday during the course of the day, high-altitude cloudbanks from the northeast can make skies gray, make visibility diffuse. Winds at all altitudes will be mostly light (peaks at high-altitudes at 30 km/hr) from the NE. Milder: at 2000m, rising from -4 to +1 degree; at 3000m, from -9 to -5 degrees. Nocturnal skies will be cloudless, with light winds.

Tendency

Danger is expected to gradually recede.

Danger Level 1 - Low



Tendency: Constant avalanche danger →
on Friday 13 December 2024



Wind slab



Avalanche danger is low, isolated danger zones due to small snowdrift patches

Danger assessment

Avalanche danger is low. Fresh snowdrifts can be triggered in isolated cases as a slab avalanche by large additional loading. In extremely steep terrain, small-sized loose snow avalanches can release due to solar radiation.

Snowpack

The snow cover is settling to an increasing degree. It is not yet sufficiently thick for activities in outlying terrain.

Weather

Nighttime skies will mostly be star-studded and dry. In northern regions, low-lying high-foglike clouds will persist. Winds at all altitudes will be light to moderate. On Thursday during the course of the day, high-altitude cloudbanks from the northeast can make skies gray, make visibility diffuse. Winds at all altitudes will be mostly light (peaks at high-altitudes at 30 km/hr) from the NE. Milder: at 2000m, rising from -4 to +1 degree; at 3000m, from -9 to -5 degrees. Nocturnal skies will be cloudless, with light winds.

Tendency

Danger expected to remain constant