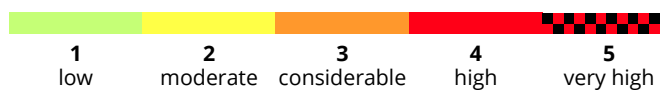
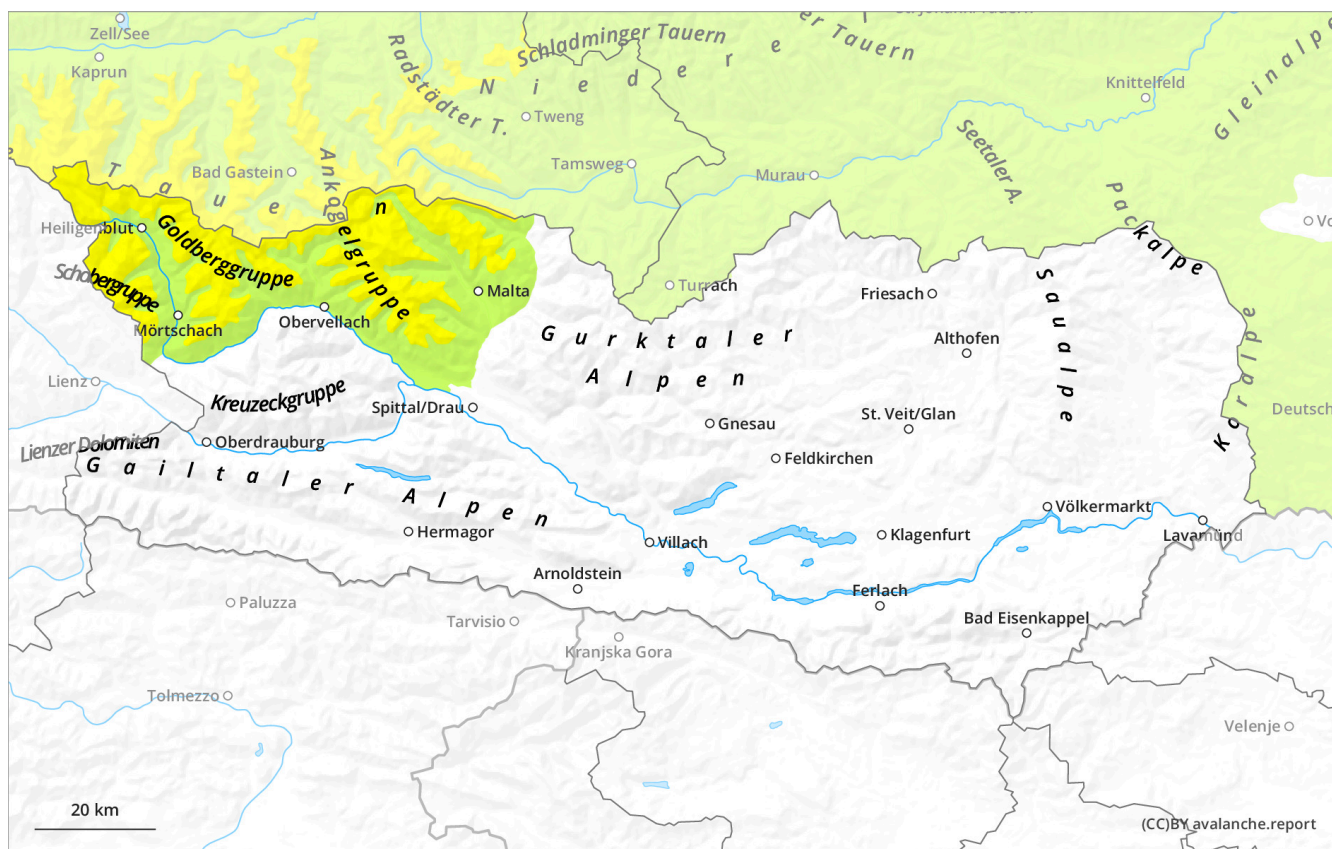


Wednesday 11 December 2024

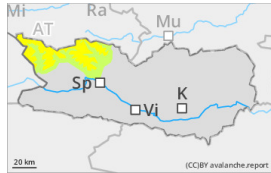
Published 10 Dec 2024, 17:00:00

Valid from 10 Dec 2024, 17:00:00 until 11 Dec 2024, 17:00:00

On wind-loaded slopes avalanches can fracture in ground-level layers



Danger Level 2 - Moderate



Tendency: Constant avalanche danger →

on Thursday 12 December 2024



Wind slab



On wind-loaded slopes avalanches can fracture in ground-level layers

Danger assessment

Weak layers in the old snow can be triggered particularly on wind-loaded slopes by one single winter sports enthusiast. The somewhat older snowdrift accumulations are easily recognized for the practiced tourers. Danger zones tend to increase in high alpine regions. Avalanches can be medium sized in isolated cases.

Avalanche headquarters have little information from high alpine regions. For that reason, the situation must be cautiously evaluated on-site. Apart from the risks of being buried in snow masses, the danger of being swept along and forced to take a fall need to be taken into consideration.

Snowpack

Danger patterns

dp.1: deep persistent weak layer

The somewhat older snowdrift accumulations now blanket a weak old snowpack above 2200m. The upper layers of the snowpack are soft; the lower layers are faceted.

At all altitudes there is still little snow on the ground for this juncture of the season. The snowpack is highly irregular, even over small areas.

Weather

On Wednesday a series of cloudbanks will pass through, but during the morning, sunshine will come through. Some high-fog will persist, extending up to 1100-1700m. Winds will be light to moderate from the northeast. At 1000m: 0 degrees; at 2000m: -5 degrees; at 3000m: -9 degrees.

Tendency

Snowdrift accumulations demand cautious assessment.