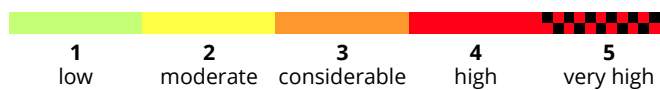
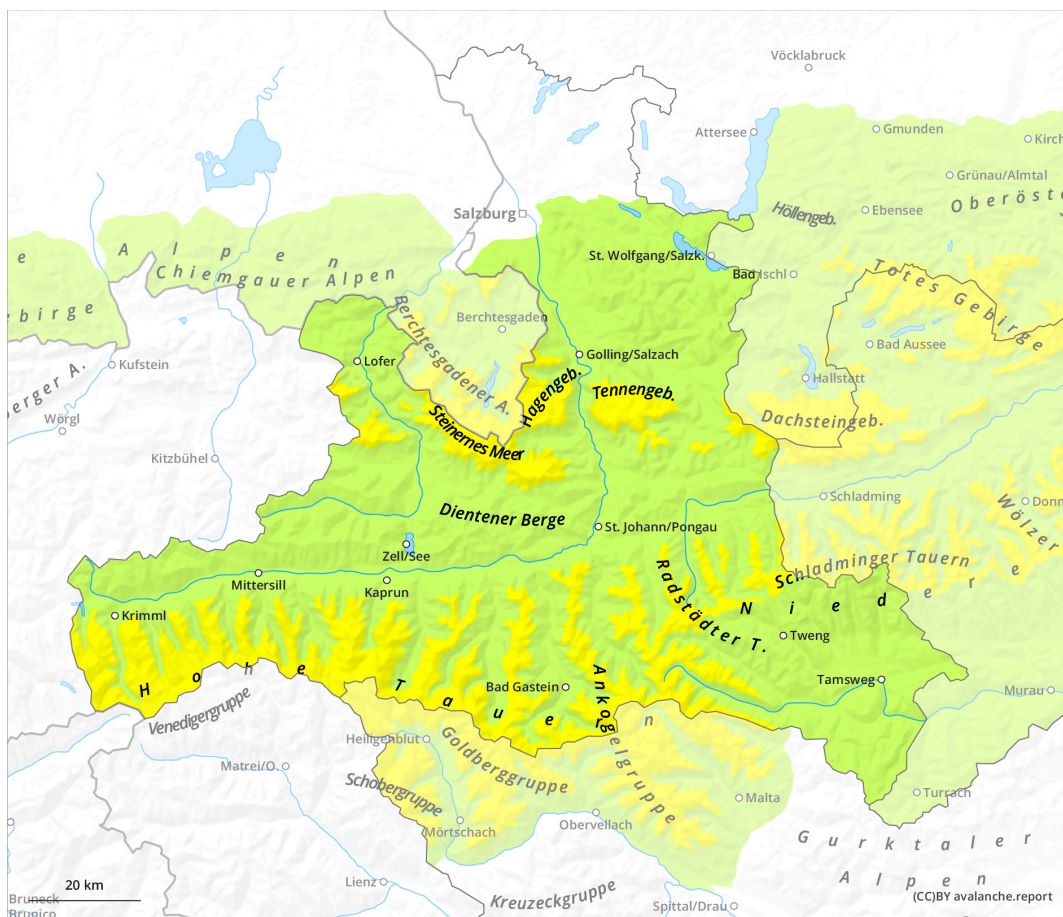
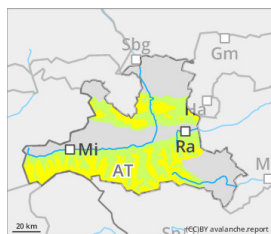


Minor snowdrift problem near ridgelines. Isolated loose-snow avalanches.



Danger Level 2 - Moderate



Wind slab



New snow



At high and high-alpine altitudes, ridgeline snowdrifts demand caution.

Danger assessment

Avalanche danger as of 2100m is moderate, danger is low below that altitude. Near ridgelines at high and high-alpine altitudes there are shallow drifts behind protruberances in the landscape behind ridges. Generally, large additional loading is necessary to trigger a small-sized slab avalanche in steep terrain. In steep rocky terrain, due to solar radiation, small loose-snow avalanches can trigger, medium-sized ones in regions where there has been heavy snowfall.

Snowpack

Loosely-packed fresh fallen snow lies deposited on last week's snowpack surface (of snowdrifts and compacted snow). At high and high-alpine altitudes the NE winds can transport the snow to ridgelines. At high and high-alpine altitudes the September snow has persisted and now serves as a compact base. Transition zones from the September snow to the November snow contain faceted crystals in isolated cases, these could serve as a fracture surface. The snow is distributed highly irregularly, ridges broad and narrow are often completely windblown, and even in other places the fresh fallen snow insufficiently blankets the snow base.

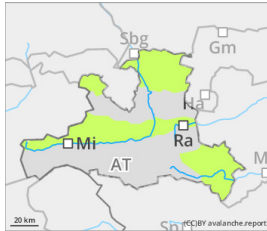
Weather

It will be sunny, high-foglike clouds will quickly disperse. Visibility will be generally good. Light NE winds will be blowing, at high-alpine altitudes they can be brisker (reaching peaks of just under 50 km/hr). Milder: at 2000m, -4 degrees in the afternoon, at 3000m -8 degrees.

Tendency

Danger is expected to gradually recede.

Danger Level 1 - Low



New snow



Small-sized loosely-packed snow avalanches are possible.

Danger assessment

Avalanche danger is low. In extremely steep terrain, small-sized loose snow avalanches can release due to solar radiation. In isolated cases near ridgelines, there are freshly generated snowdrift masses which can, however, only trigger a slab avalanche in general by large additional loading.

Snowpack

Loosely-packed fresh fallen snow lies deposited atop a well settled and consolidated base or on bare ground. The snowpack is not sufficiently thick in all places for snow sports in outlying terrain.

Weather

Tuesday in the Northern Alps and the Lungau will bring some clouds but it will remain largely dry. Visibility will be somewhat reduced but improve during the course of the day. In the other mountain massifs, sunny weather can be expected, visibility will generally be very good. Winds will remain light. Milder. At 2000m: -4 degrees in the afternoon.

Tendency

Danger expected to remain constant