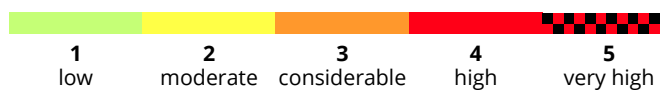
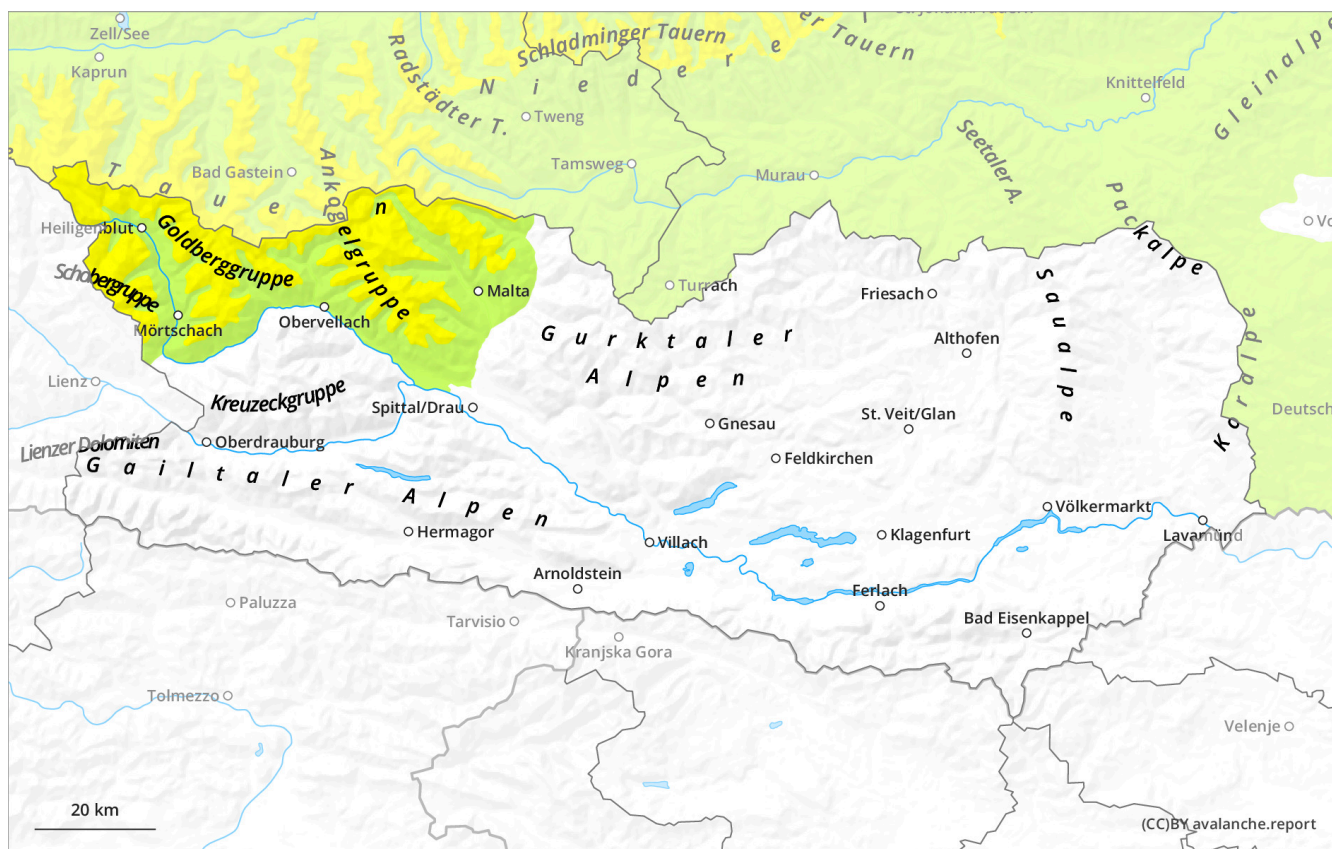


Tuesday 10 December 2024

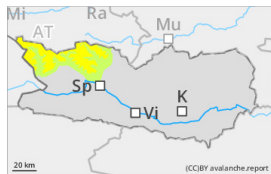
Updated 10 Dec 2024, 10:58:00

Valid from 9 Dec 2024, 17:00:00 until 10 Dec 2024, 17:00:00

Snowdrift accumulations generated over the last 3 days are the major danger



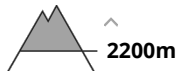
Danger Level 2 - Moderate



Tendency: Constant avalanche danger →
on Wednesday 11 December 2024



Wind slab



The snowdrift accumulations generated over the last 3 days are the major danger.

Danger assessment

As a result of fresh snowfall and strong-to-storm strength winds from varying directions, trigger-sensitive snowdrift accumulations have been generated since Friday, particularly in gullies, bowls and behind protruberances in the landscape. These can be triggered by one single skier in all aspects above 2200m. Due to winds the drifted masses will continue to grow further.

Avalanche headquarters have little information from high alpine regions. For that reason, the situation must be cautiously evaluated on-site. Apart from the risks of being buried in snow masses, the danger of being swept along and forced to take a fall need to be taken into consideration.

Snowpack

Danger patterns

dp.6: cold, loose snow and wind

dp.1: deep persistent weak layer

From place to place, 30-40 cm of snowfall has fallen above 2200m since Friday. Often strong-velocity winds have covered the fresh fallen snow. Freshly generated snowdrift accumulations are poorly bonded with each other and with the old snow. The upper layers of the snowpack are soft; the lower layers are faceted.

There is still little snow on the ground at all altitudes for this juncture of the season. The snowpack is highly irregular, even over small areas.

Weather

On Monday, the low-pressure front will maintain its impact, the mountains will be shrouded in clouds, light snowfall will prevail initially. Moderate to strong NE winds. At 1000m: -1 degree; at 2000m: -6 degrees; at 3000m: -11 degrees.

Tendency

Snowdrift accumulations demand cautious assessment.