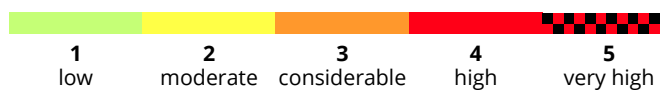
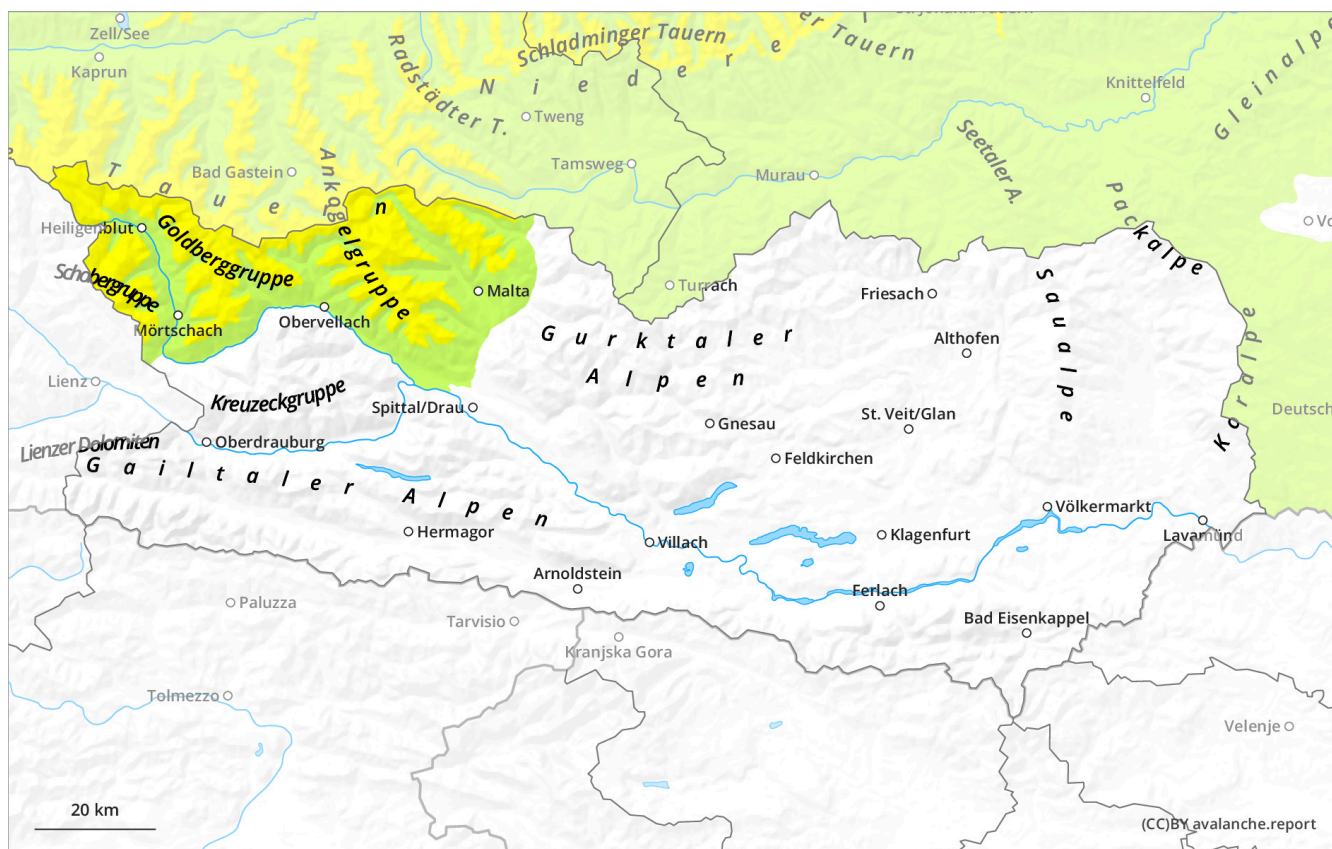


Monday 9 December 2024

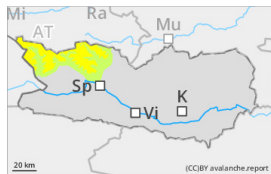
Published 8 Dec 2024, 17:00:00

Valid from 8 Dec 2024, 17:00:00 until 9 Dec 2024, 17:00:00

Caution urged towards trigger-sensitive snowdrift accumulations



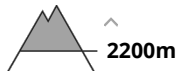
Danger Level 2 - Moderate



Tendency: Constant avalanche danger →
on Tuesday 10 December 2024



Wind slab



Caution urged towards trigger-sensitive snowdrift accumulations

Danger assessment

As a result of fresh snowfall and strong-to-storm strength winds from varying directions, trigger-sensitive snowdrift accumulations have been generated since Friday, particularly in gullies, bowls and behind protruberances in the landscape. These can be triggered by one single skier in all aspects above 2200m. Due to winds the drifted masses will continue to grow further, particularly on SE-S-SW facing slopes in high alpine regions. Caution is urged esp. along the Salzburg. border in the regions where there has been snowfall. Avalanches are medium-sized in isolated cases. Apart from the risks of being buried in snow masses, the danger of being swept along and forced to take a fall need to be taken into consideration.

Snowpack

Danger patterns

dp.6: cold, loose snow and wind

dp.1: deep persistent weak layer

From place to place, 20-25 cm of snowfall has fallen since Friday. Winds were blowing at strong-to-storm strength. Freshly generated snowdrift accumulations are poorly bonded with each other and with the old snow. The upper layers of the snowpack are soft; the lower layers are faceted.

Weather

On Monday, the low-pressure front will maintain its impact, the mountains will be shrouded in clouds, light snowfall will prevail initially. Moderate to strong NE winds. At 1000m: -1 degree; at 2000m: -6 degrees; at 3000m: -11 degrees.

Tendency

Forecasts of developments, including of avalanche danger, are still uncertain.