

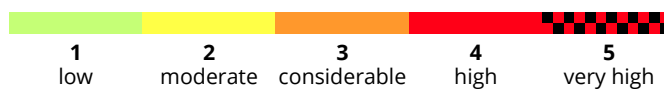
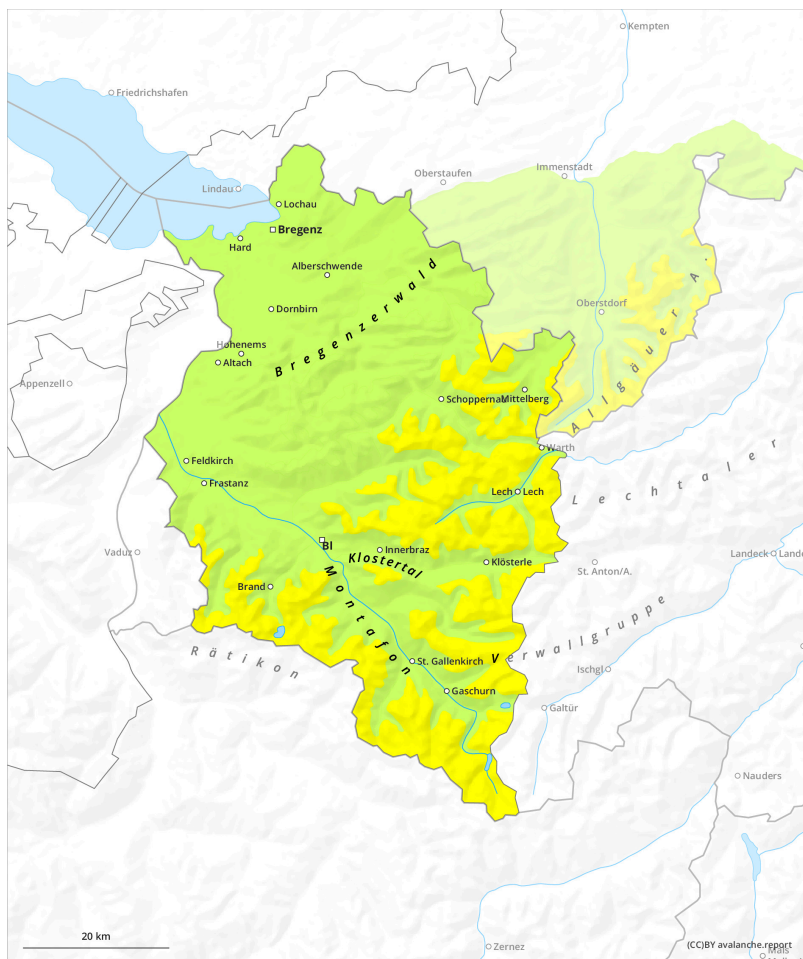
Avalanche bulletin Vorarlberg

Sunday 8 December 2024

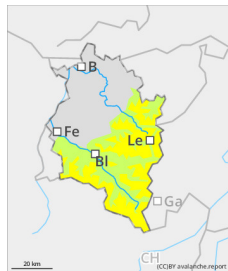
Published 7 Dec 2024, 17:00:00

Valid from 7 Dec 2024, 17:00:00 until 8 Dec 2024, 17:00:00

Due to fresh snowfall and winds, slightly increased avalanche danger from region to region



Danger Level 2 - Moderate



Tendency: Increasing avalanche danger
on Monday 9 December 2024



Wind slab



Rising avalanche danger above the treeline due to fresh snow and wind

Danger assessment

Above the treeline, fresh snowdrifts are accumulating. These are often prone to triggering and easily unleashed as a slab avalanche. Their magnitude and spread tend to increase with ascending altitude. Avalanche headquarters currently has little data from outlying regions about the snowpack, for that reason a cautious on-site evaluation is important. Below the treeline, avalanche danger is low. Isolated danger zone for small triggerings (slides) are possible in steep terrain. The risks of being swept along and forced to take a fall need to be considered.

Snowpack

By Sunday evening, 5-10cm of fresh snow is anticipated, locally up to 15cm. It will fall on a mostly wind-impacted, generally well bonded old snowpack surface. With ascending altitude, particularly in ridgeline and pass areas, fresh, mostly small snowdrifts masses prevail. These are often minimally bonded with the old snowpack and thus, prone to triggering.

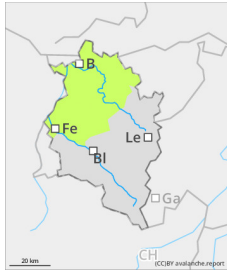
Weather

Widespread rainfall and snowfall in the evening, intermittently heavy. Snowfall level will descend to nearly 600m. Nighttime skies will be largely dry. Sunday will be cloudy all day long, low lying clouds and fog will prevail, and light snowfall will be far-reaching, with uncertain amounts. Temperature at 2000m: -7 degrees. High altitude winds: at moderate velocity from north to east.

Tendency

Depending on fresh fallen snow and wind influence, avalanche danger at high altitudes can rise further by Monday.

Danger Level 1 - Low



Tendency: Constant avalanche danger →
on Monday 9 December 2024



Wind slab



Treeline

Slightly rising avalanche danger above the treeline due to fresh snow and wind.

Danger assessment

Above the treeline, fresh, mostly small snowdrift accumulations require caution. Isolated danger zones for small avalanche triggerings (slides) in steep terrain are possible. Avalanche headquarters currently has little data from outlying regions about the snowpack, for that reason a cautious on-site evaluation is important. Below the treeline, no marked avalanche problem is evident.

Snowpack

By Sunday evening, 5-10cm of fresh snow is anticipated which will be transported by winds. It will fall on a mostly bare ground, at higher altitudes atop a well-bonded and mostly wind-impacted shallow snowpack surface. Above the treeline, particularly in ridgeline and pass areas, fresh, mostly small snowdrifts masses prevail.

Weather

In the evening, rainfall and snowfall, intermittently heavy. Snowfall level will descend to nearly 600m. Nighttime skies will be largely dry. Sunday will be cloudy all day long, low lying clouds and fog will prevail, and light snowfall will be far-reaching, with uncertain amounts. Temperature at 2000m: -7 degrees. High altitude winds: at moderate velocity from north to east.

Tendency

Currently, no significant change is expected.