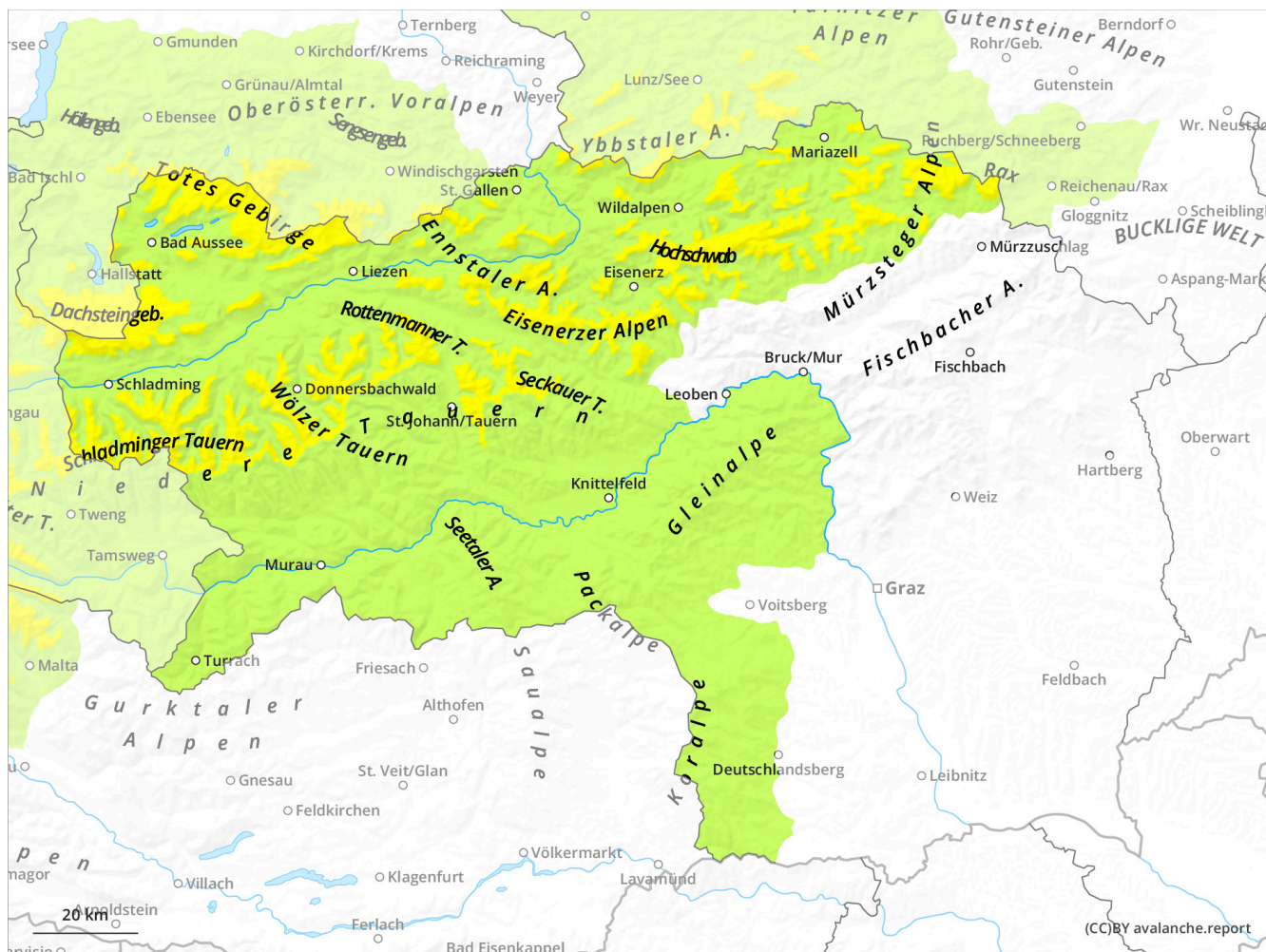
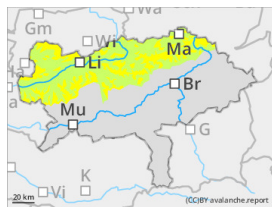


Northbound more newly fallen snow than predicted - wind slab problem above 1.800 m AMSL!



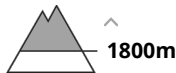
Danger Level 2 - Moderate



Tendency: Constant avalanche danger →
on Monday 9 December 2024



Wind slab



Caution: snow drift is prone to triggering, especially in gullies and bowls with old snowpacks.

Danger assessment

The Avalanche danger above around 1.800 m AMSL is moderate, below 1.800 m AMSL: low. Stormy winds from west to northwest cleared out exposed slopes but drifted snow towards gullies and bowls behind ridgelines. Snowdrift packs tend to be prone to triggering, possible slab avalanches are small to medium, could be triggered by individual skiers with small additional load. Due to temporary warming and radiation on Saturday the situation eased out on sunny slopes, the situation on shady slopes is marginal changing. Due to windshift increasing snowdrift in west sector is expected. Depending on the wind influence avalanche prone locations can offer only weak snowpack layers, risk of falling.

Snowpack

In the area of the northern Alps as well as on the north side of Tauern the amount of new snow during the night of Saturday is significantly more than predicted. The amount of new snow in Totes Gebirge and the area of Hochschwab is about 50 cm. The snow got on bare soils, fresh snow drift in gullies and bowls in high shady slopes got on bonded snow from the last November days which transformed to faceted snow crystals.

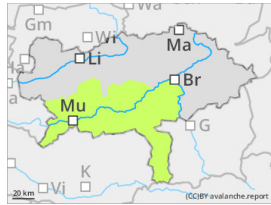
Weather

After the low pressure weather system and an intermediate high pressure system a cold front will arrive from west. A low pressure system coming from Italy will be dominant. During the night heavy clouds will appear and lead to low visibility on Sunday and overcast. Minimal snowing on the south side of Tauern and along the Gurk Alps, Seetaler Alps to Koralpe. Medium winds from northeast and southeast. Temperatures are falling and reach around noon in 1.500 m AMSL around -2° C and in 2.000m AMSL -5°C. Following days will moderate cold and unstable. Larger amounts of snow are not predicted.

Tendency

Low amounts of new snow and weakening wind will not lead to significant changes of the avalanche danger scale.

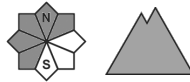
Danger Level 1 - Low



Tendency: Constant avalanche danger →
on Monday 9 December 2024



Wind slab



Small Danger zones due to snow drifts

Danger assessment

The avalanche prone locations due to new snow drift are located on shady slopes, where the new snow is above of rests of old snow from the last Novemberdays. In higher altitudes the fundament has transformed to faceted snow crystals and is in relation to snow drift prone to triggering. Slab avalanches are possible with higher additional load, but the amount of the possible avalanche stays small. Falling risks due to minor snow pack.

Snowpack

South of the Alps few snow, expected snowfall during the night of Saturday predominately orth of the Alps. The forecasted low pressure system from Italy 10-20 cm new snow is expected south of the Alps, vivid winds will spread the new snow unevenly in the area.

Weather

After the low pressure weather system and an intermediate high pressure system a cold front will arrive from west. A low pressure system coming from Italy will be less dominant. During the night heavy clouds will appear and lead to low visibility on sunday and overcast. Minimal snowing on the south side of Tauern and along the Gurk Alps, Seetaler Alps to Koralpe. Medium winds from northeast and southeast. Temperatures are falling and reach around noon in 1.500 m AMSL around -2° C and in 2.000m AMSL -5°C. Following days will moderate cold and unstable. Larger amounts of snow are not predicted.

Tendency

Decreasing winds, few new snow will not lead to significant changes of the avalanche danger.