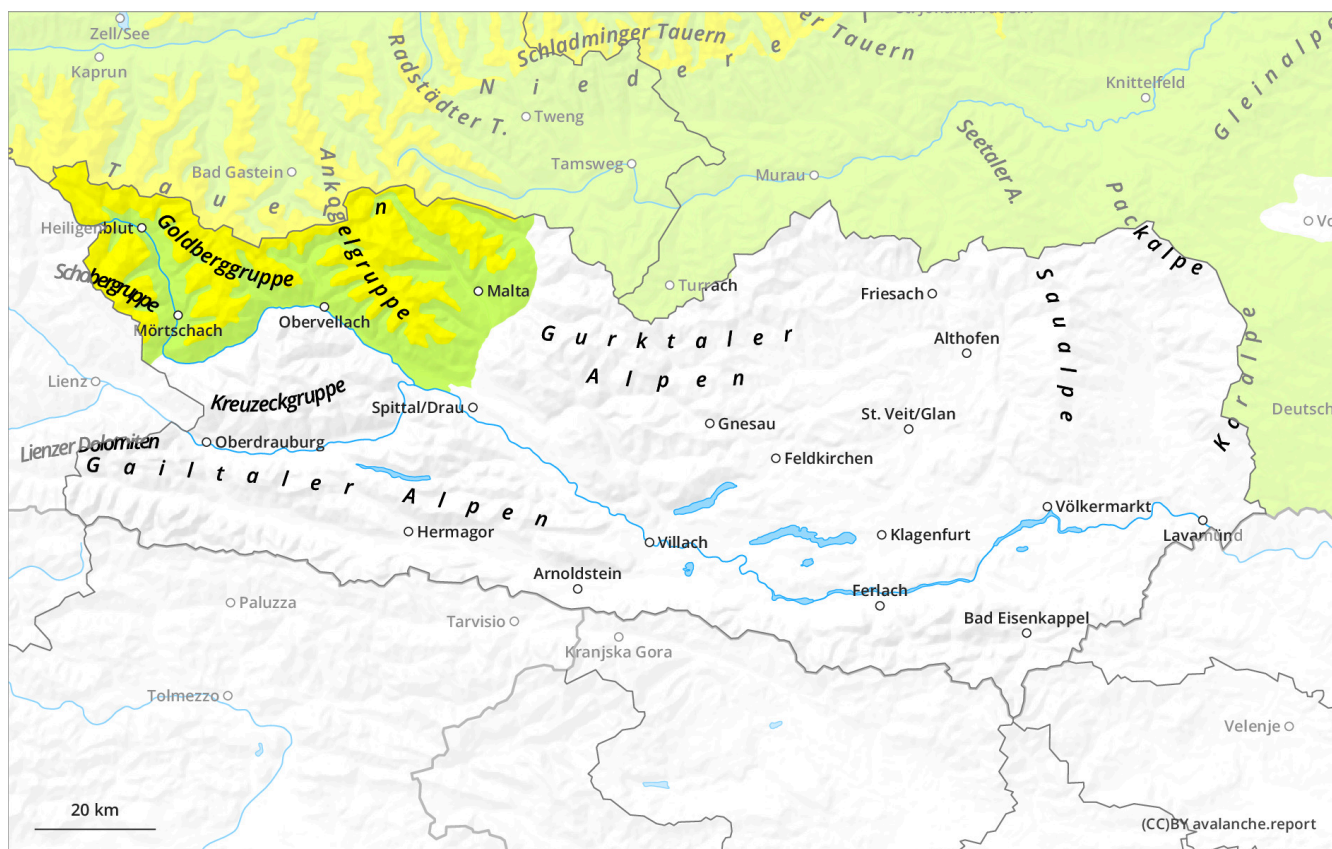
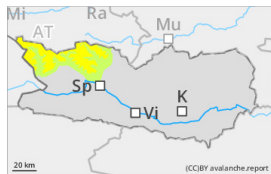


Caution urged towards trigger-sensitive snowdrift accumulations



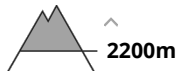
Danger Level 2 - Moderate



Tendency: Constant avalanche danger →
on Monday 9 December 2024



Wind slab



Caution urged towards trigger-sensitive snowdrift accumulations

Danger assessment

As a result of fresh snowfall and often storm-strength NW winds, trigger-sensitive snowdrift accumulations have been generated since Friday, particularly in gullies, bowls and behind protruberances in the landscape. These can be triggered by one single skier in all aspected above 2200m. Due to NW winds the drifted masses will continue to grow. Caution is urged esp. along the Salzburg. border in the regions where there has been snowfall. Avalanches are medium-sized in isolated cases. Apart from the risks of being buried in snow masses, the danger of being swept along and forced to take a fall need to be taken into consideration.

Snowpack

Danger patterns

dp.6: cold, loose snow and wind

dp.1: deep persistent weak layer

From place to place, 5-15 cm of snowfall has fallen, locally more. Winds were blowing intermittently at storm-strength. Freshly generated snowdrift accumulations are poorly bonded with each other and with the old snow. The upper layers of the snowpack are soft; the lower layers are faceted.

Weather

On Sunday, cloud cover will be heavy, the summits will mostly be shrouded in fog. A bit of snowfall is possible, particularly in early hours, then later on during the afternoon. Mostly moderate NE/SE winds will be blowing, strong in exposed terrain. Temperatures at 1000m: 0 degrees; at 2000m: -5 degrees; at 3000m: -11 degrees.

Tendency

Forecasts of developments, including of avalanche danger, are still uncertain.