

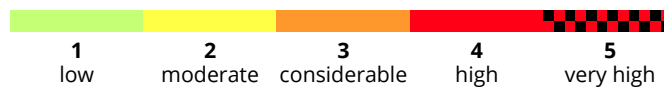
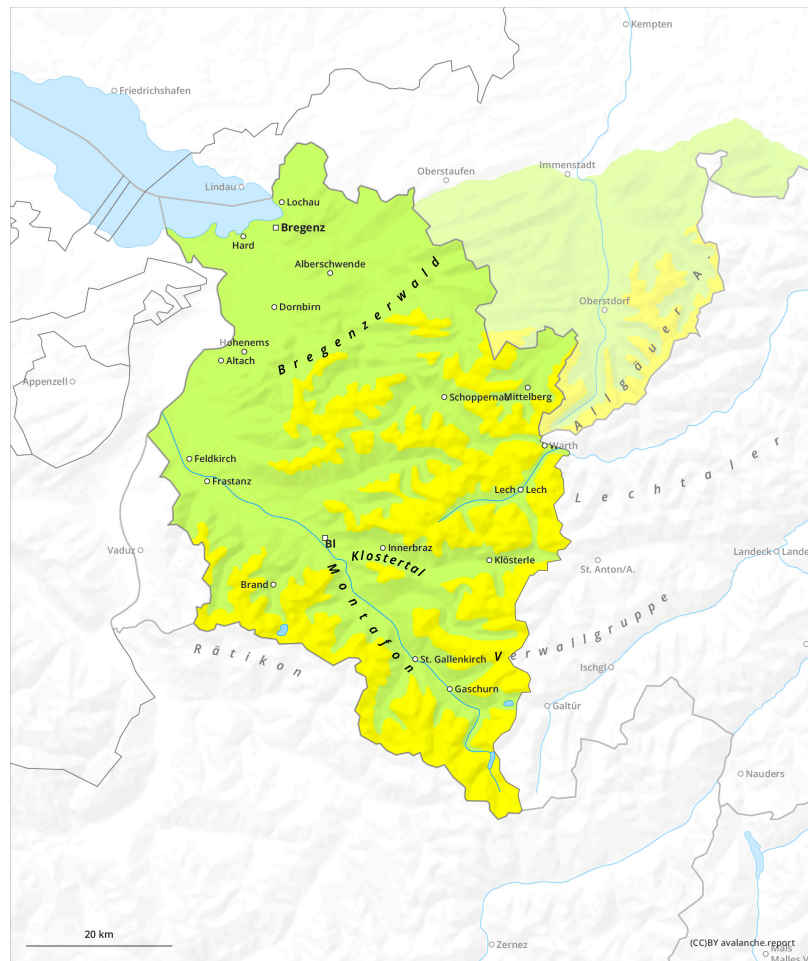
Avalanche bulletin Vorarlberg

Saturday 7 December 2024

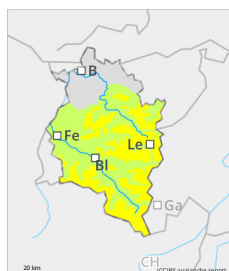
Updated 7 Dec 2024, 08:19:00

Valid from 6 Dec 2024, 17:00:00 until 7 Dec 2024, 17:00:00

Slightly increasing avalanche danger above the treeline



Danger Level 2 - Moderate



Tendency: Increasing avalanche danger
on Sunday 8 December 2024



Wind slab



Treeline

Rising avalanche danger above the treeline due to fresh snow and wind

Danger assessment

Above the treeline, fresh snowdrifts are accumulating. They are often prone to triggering and easily triggered as a slab avalanche. Their magnitude and spread tend to increase with ascending altitude. Avalanche headquarters currently has little data from outlying regions about the snowpack, for that reason a cautious on-site evaluation is important. Below the treeline, avalanche danger is low. Isolated danger zone for small triggerings (slides) are possible in steep terrain. The risks of being swept along and forced to take a fall need to be considered.

Snowpack

Up to intermediate altitudes, the shallow snowpack has been weakened by rainfall. During the coming night of partially clear skies, it will regain firmness. By Saturday evening, an additional 5-10 cm of fresh snow is anticipated, to be transported by winds. Above the treeline, and with ascending altitude, particularly in ridgeline and pass areas, fresh and initially small snowdrift accumulations will be generated. They are prone to triggering in ridgeline zones and, in particular, in steep wind-loaded gullies and bowls.

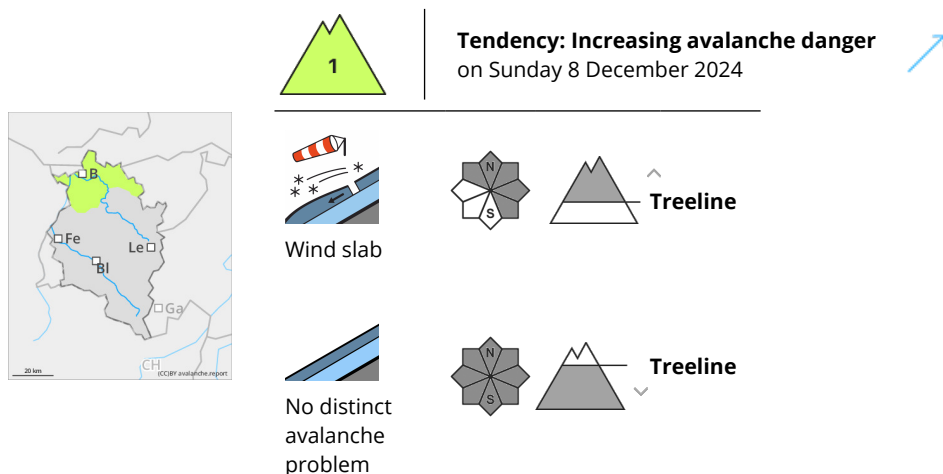
Weather

In the latter part of the night, heavy cloud cover will move in. On Saturday morning, clouds will dominate. Bright intervals are possible. In the afternoon, precipitation will set in from the west, the snowfall level will descend from 1700m down to low lying areas by the end of the day. Temperature at 2000m: -4 to +1 degree. High altitude winds: in high alpine regions and in foehn-exposed regions: brisk to strong SW winds.

Tendency

As a result of some fresh fallen snow and wind influence, avalanche danger can rise further by Sunday.

Danger Level 1 - Low



Rising avalanche danger above the treeline due to fresh snow and wind.

Danger assessment

Fresh snow is expected: 5-10 cm. Above the treeline, fresh, small snowdrift accumulations will be generated. Avalanche headquarters currently has little data from outlying regions about the snowpack, for that reason a cautious on-site evaluation is important. Below the treeline, avalanche danger is low. Isolated danger zone for small triggerings (slides) are possible in steep terrain.

Snowpack

Up to intermediate altitudes, the shallow snowpack has been weakened by rainfall. During the coming night of partially clear skies, it will regain firmness. By Saturday evening, an additional 5-10 cm of fresh snow is anticipated, to be transported by winds. Above the treeline, and with ascending altitude, particularly in ridgeline and pass areas, fresh and initially small snowdrift accumulations will be generated. They are prone to triggering in ridgeline zones and, in particular, in steep wind-loaded gullies and bowls. Rising avalanche danger above the treeline due to fresh snow and wind

Weather

Friday will begin with gloomy and stormy weather, rainfall up to 2000m to start with. In early morning the snowfall level will descend to 1300m, but there will also be bright intervals during the morning hours. Thereafter, conditions will become variable and windy, with clouds, sunshine and isolated showers. At 2000m: dropping from +1 to -5 degrees. Strong to stormy westerly winds at high altitudes.

Tendency

As a result of some fresh fallen snow and wind influence, avalanche danger can rise slightly.