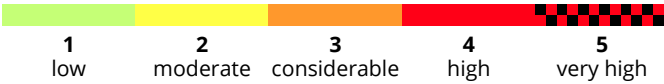
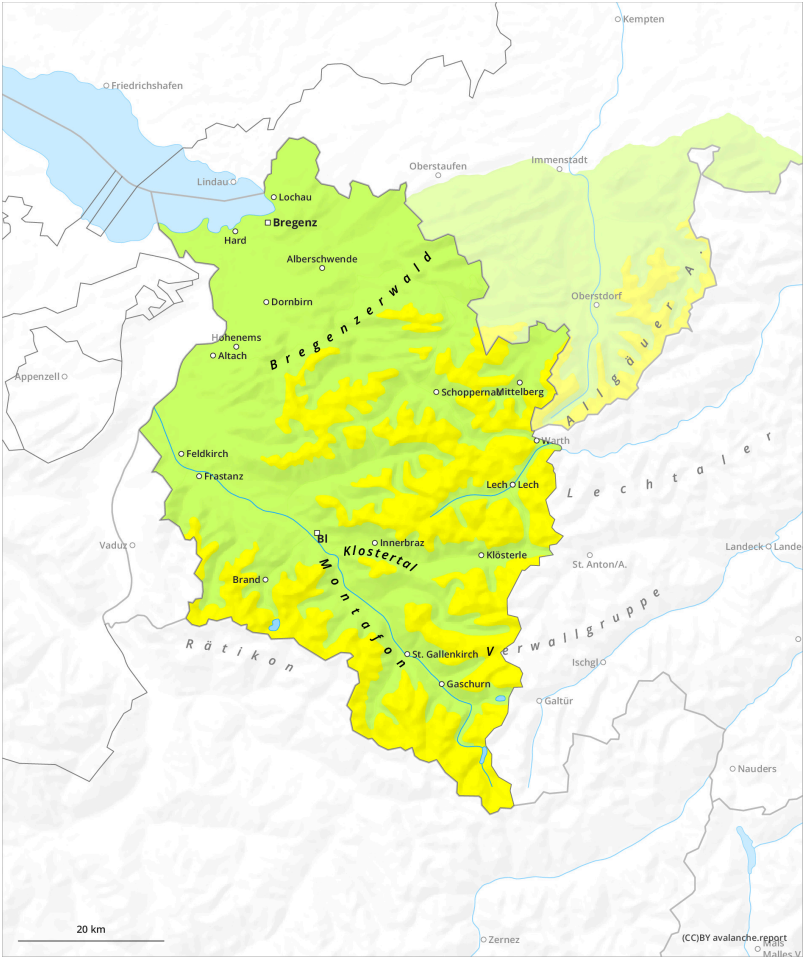


Avalanche bulletin Vorarlberg

Saturday 7 December 2024

Published 6 Dec 2024, 17:00:00
Valid from 6 Dec 2024, 17:00:00 until 7 Dec 2024, 17:00:00



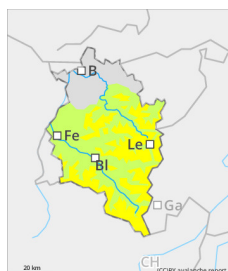
Avalanche bulletin Vorarlberg

Saturday 7 December 2024

Published 6 Dec 2024, 17:00:00

Valid from 6 Dec 2024, 17:00:00 until 7 Dec 2024, 17:00:00

Danger Level 2 - Moderate



Tendency: Increasing avalanche danger
on Sunday 8 December 2024



Wind slab



Treeline

Rising avalanche danger above the treeline due to fresh snow and wind

Danger assessment

Below the treeline, avalanche danger is low. Isolated danger zones for small releases (slides) are possible in extremely steep terrain. Apart from the danger of being swept along, the risks of being forced to take a fall also require consideration. Above the treeline, small fresh snowdrift accumulations are forming, they are prone to triggering and easily unleashed as small slab avalanches. There is still little data coming into the Avalanche Warning Services headquarters from the outlying regions. Cautious on-site evaluation is recommended.

Snowpack

A bit of fresh snowfall is anticipated, deposited atop a well-consolidated, shallow snowpack. At high altitudes this snow is being transported by strong to storm-strength winds, thereby generating small snowdrift accumulations especially in ridgeline and pass zones above the treeline. These drifted masses will grow during the course of the day, they are trigger-sensitive particularly in wind-loaded gullies and bowls.

Weather

Friday will begin with gloomy and stormy weather conditions, with rainfall up to 2000m to start with. During early morning, the snowfall level will descend down to 1300m, but there will also be bright intervals during the morning hours. Thereafter, conditions will become variable and windy, with clouds, sunshine and isolated showers. At 2000m: dropping from +1 to -5 degrees. Strong to stormy westerly winds at high altitudes.

Tendency

Due to further fresh snowfall and wind impact, avalanche danger will rise significantly over the weekend.

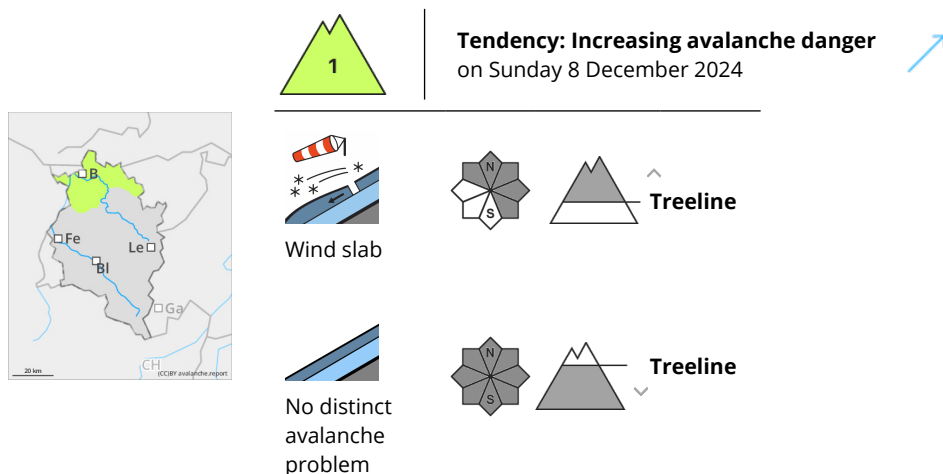
Avalanche bulletin Vorarlberg

Saturday 7 December 2024

Published 6 Dec 2024, 17:00:00

Valid from 6 Dec 2024, 17:00:00 until 7 Dec 2024, 17:00:00

Danger Level 1 - Low



Rising avalanche danger above the treeline due to fresh snow and wind.

Danger assessment

Below the treeline, no marked avalanche problem exists. Isolated danger zones for small releases (slides) occur in extremely steep terrain. Apart from the danger of being swept along, the risks of being forced to take a fall also require consideration. Above the treeline, small fresh snowdrift accumulations are forming, they are prone to triggering and easily unleashed as small slab avalanches. There is still little data coming into headquarters from the outlying regions. On-site, cautious evaluation is recommended.

Snowpack

A bit of fresh snowfall is anticipated, deposited atop a well-consolidated, shallow snowpack. At high altitudes this snow is being transported by strong to storm-strength winds, thereby generating small snowdrift accumulations especially in ridgeline and pass zones above the treeline. These drifted masses will grow during the course of the day. Particularly in wind-loaded gullies and bowls they are trigger-sensitive.

Weather

Friday will begin with gloomy and stormy weather, rainfall up to 2000m to start with. In early morning the snowfall level will descend to 1300m, but there will also be bright intervals during the morning hours. Thereafter, conditions will become variable and windy, with clouds, sunshine and isolated showers. At 2000m: dropping from +1 to -5 degrees. Strong to stormy westerly winds at high altitudes.

Tendency

Due to more snowfall and wind impact, avalanche danger will rise significantly over the weekend.